

*Women in
Urbanism*

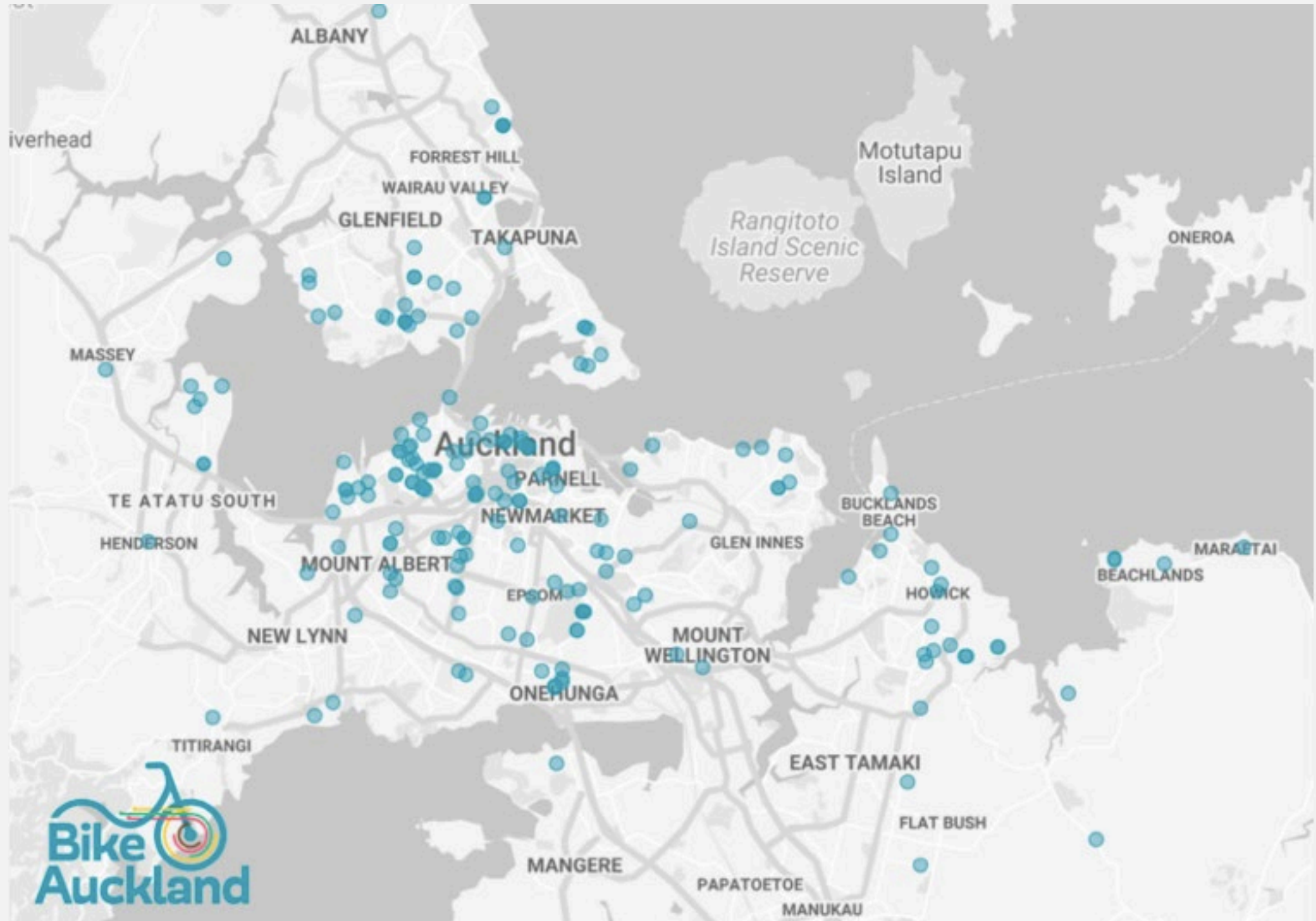
LIFE IN A LOW-TRAFFIC NEIGHBOURHOOD

A report prepared for Women in Urbanism Aotearoa
by Dr Kirsty Wild



Auckland







[View image on Twitter](#)

12th of April 13.36 Stat time
corner of Chester Ave
and garnet road

People on wheels

people on foot

Bicycles IIII IIII IIII
III

jog IIII

Scooter 1

Dog
1

Shateboard

Pushchair

wheelchair

WALK

Total
21

IIII IIII IIII IIII IIII

Total
31

vehicles

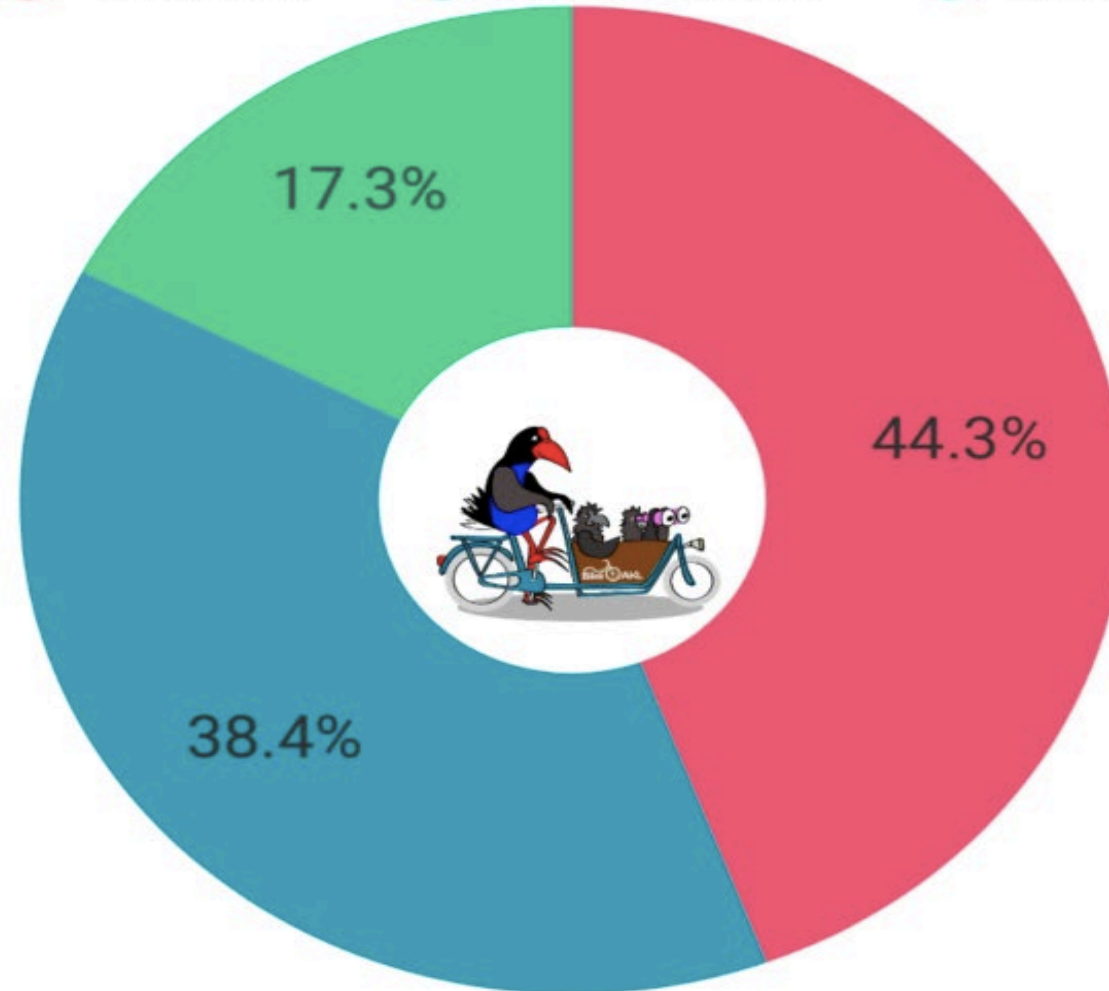
what else I see

car IIII IIII IIII IIII
IIII IIII

1 walking frame

Bus 1

● Vehicles ● Pedestrians ● Bikes



Backyard Bike Count 2020

Mode share, Level 4 Lockdown





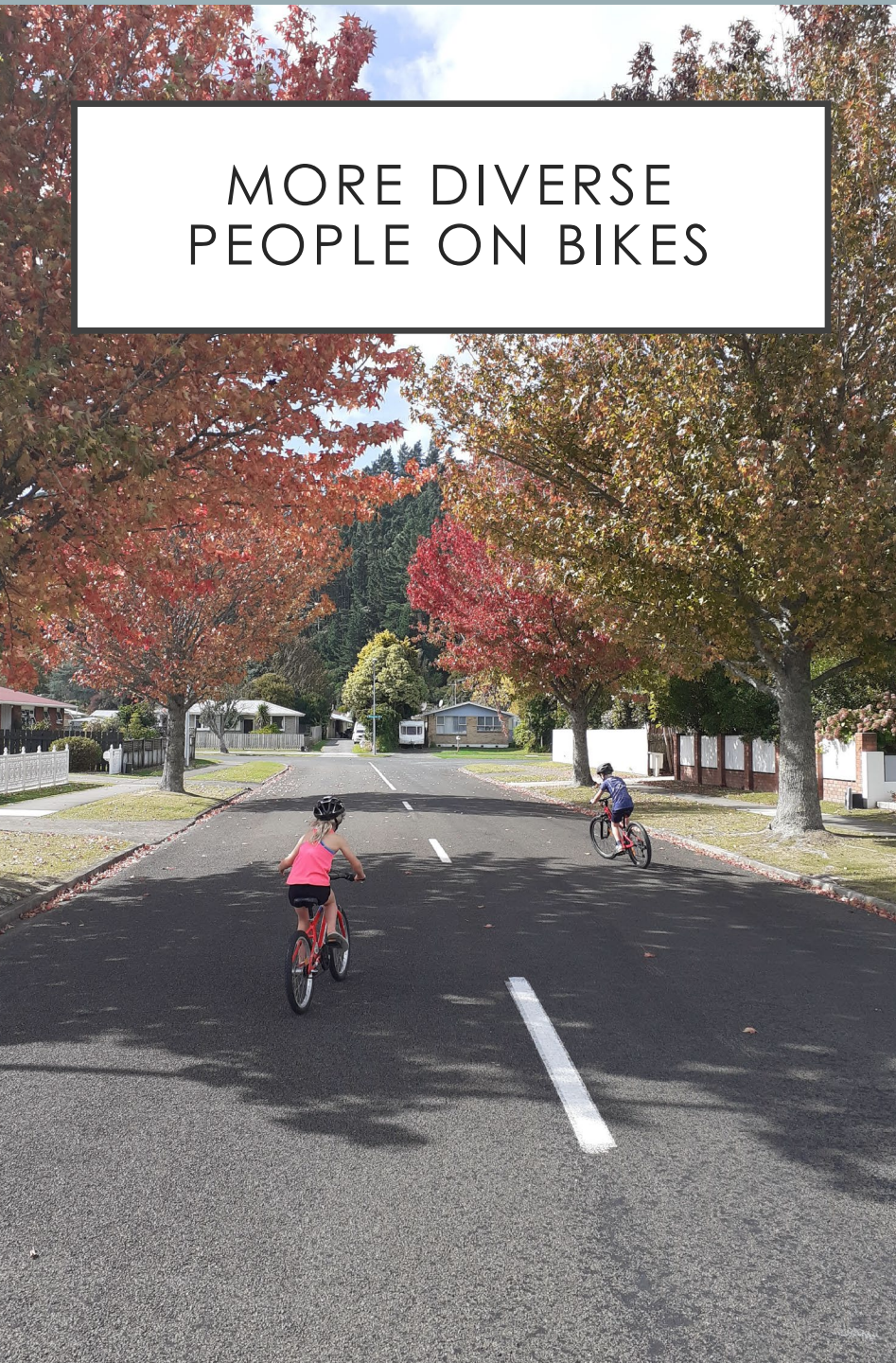
QUIET



FEELING LESS RUSHED



MORE DIVERSE PEOPLE ON BIKES



SOCIAL CONNECTION



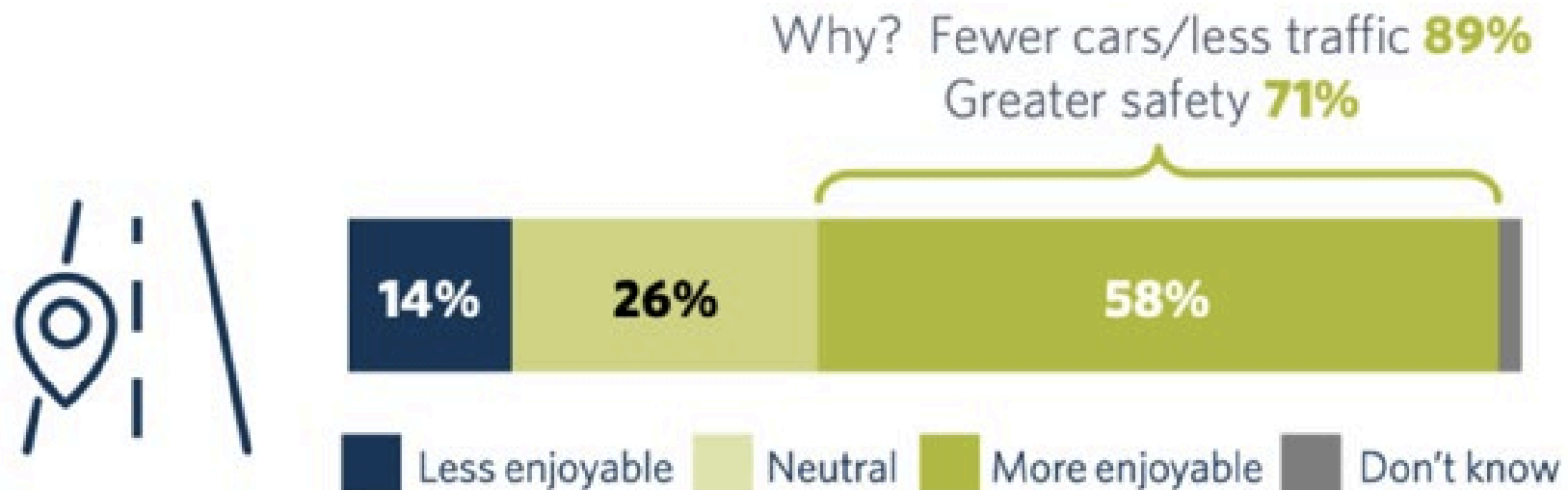
CONNECTING WITH
NATURE



AIR POLLUTION



Perception of current streets



Covid-19 Impacts on Transport. April, 2020. Waka Kotahi/NZTA



Streets for transport and health: The opportunity of a temporary road closure for neighbourhood connection, activity and wellbeing

Simon Kingham ^a , Angela Curl ^b, Karen Banwell ^a

[Show more](#) 

<https://doi.org/10.1016/j.jth.2020.100872>

[Get rights and content](#)

Highlights

- A temporary street closure was used to examine the impact of traffic

Re-Working Appleyard in a Low Density Environment: An Exploration of the Impacts of Motorised Traffic Volume on Street Livability in Christchurch, New Zealand

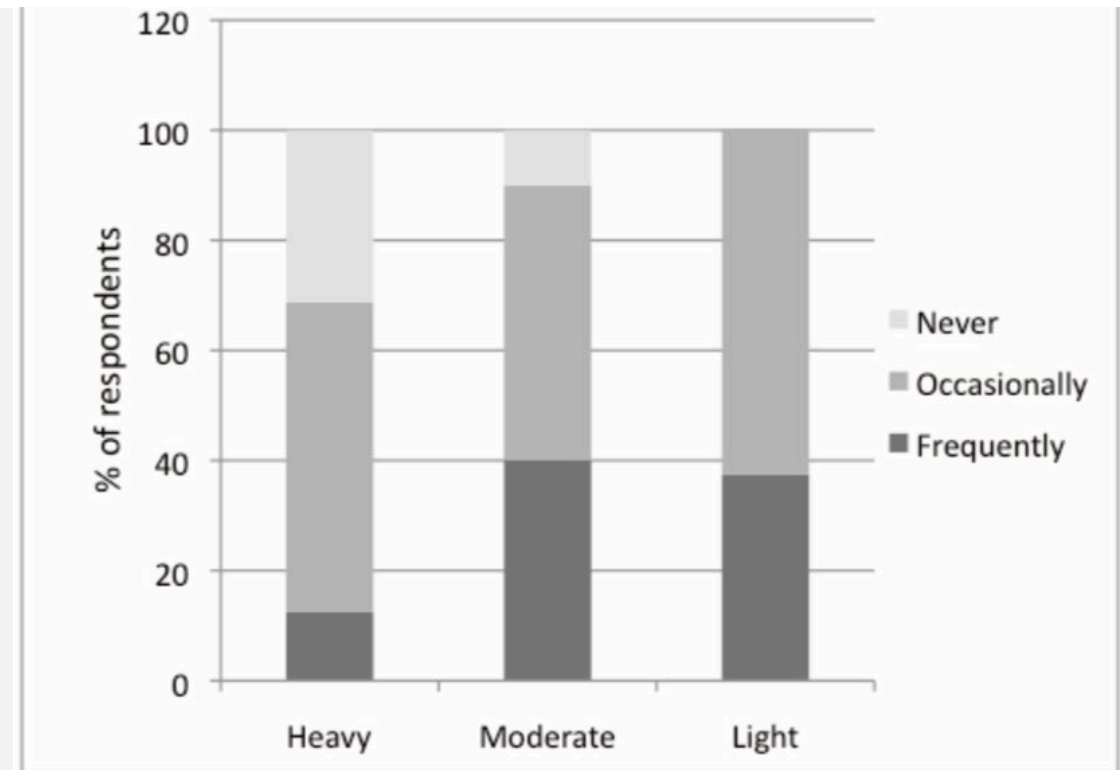


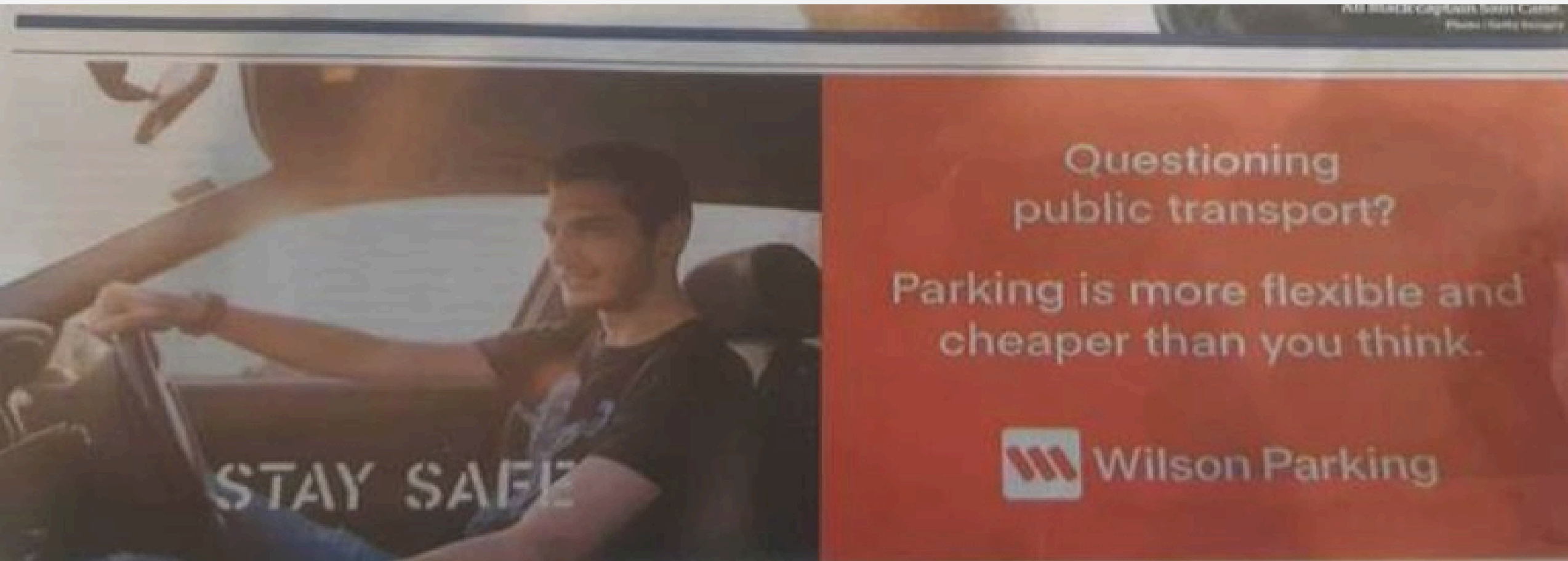
Figure 4: Community Interactions

LOW-TRAFFIC NEIGHBOURHOODS

- The 3 Cs – closed spaces, crowded places, and close contact
- Supporting stay local orders
- Restoration and connection (pandemic and recession)
- Maintaining community buy-in

Particular challenge around the rise of the 'Car as PPE'

Intensifying and deepening the rising problem of traffic related 'community severance' in our communities.







Si ti piace la natura, modifica.

CAPOTA





“We’ve seen strong support for tactical urbanism initiatives like NZTA’s Innovating Streets program.

Almost 3 in 4 (72%) Aucklanders support initiatives that focus on creating safe spaces for walking and cycling. More than half of people surveyed believe that these initiatives are more relevant since the pandemic began.”

“Almost half (48%) of people believe that Auckland Transport should take the opportunity to fast track improvements in cycling and shared paths while the roads are quiet. (only 23% disagree).”

Auckland Transport (2020) Innovating Streets Survey May 2020