

NZUP - A Step Change in Social and Sustainable Outcomes

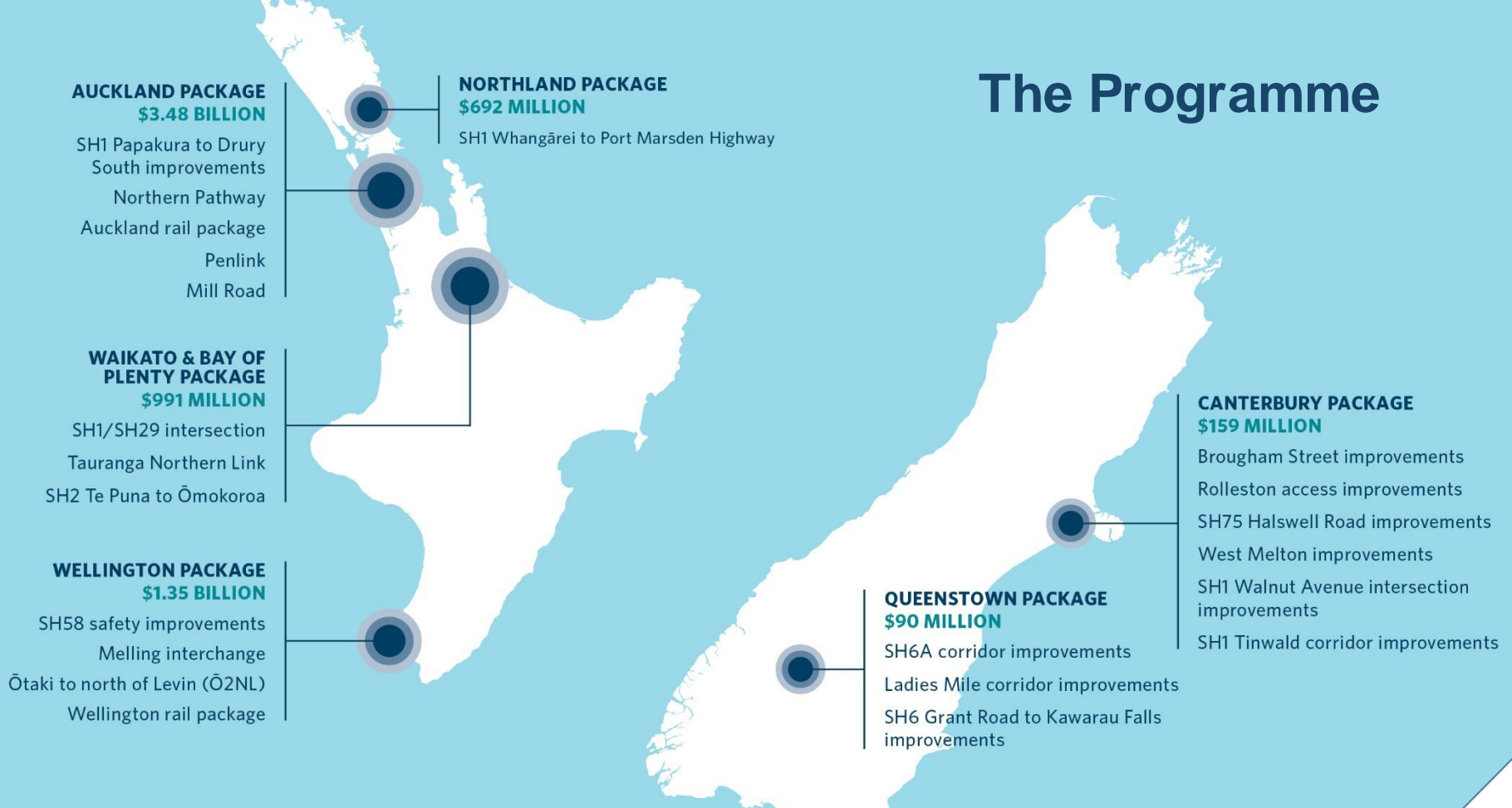
Rebekah Pokura-Ward Waka Kotahi NZTA

Cameron Law

Waka Kotahi NZTA



The Programme



Step Change Vision: We aim to make substantive and enduring improvements for our people, our suppliers, our communities and our environment by achieving these step changes through the NZ Upgrade Programme.

SAFETY

Making health and safety a priority in all areas of the Programme



DELIVERY EFFICIENCY

Greater Programme-wide delivery efficiencies



SUSTAINABILITY

Improved social, economic and environmental outcomes



Social and Sustainable Outcomes

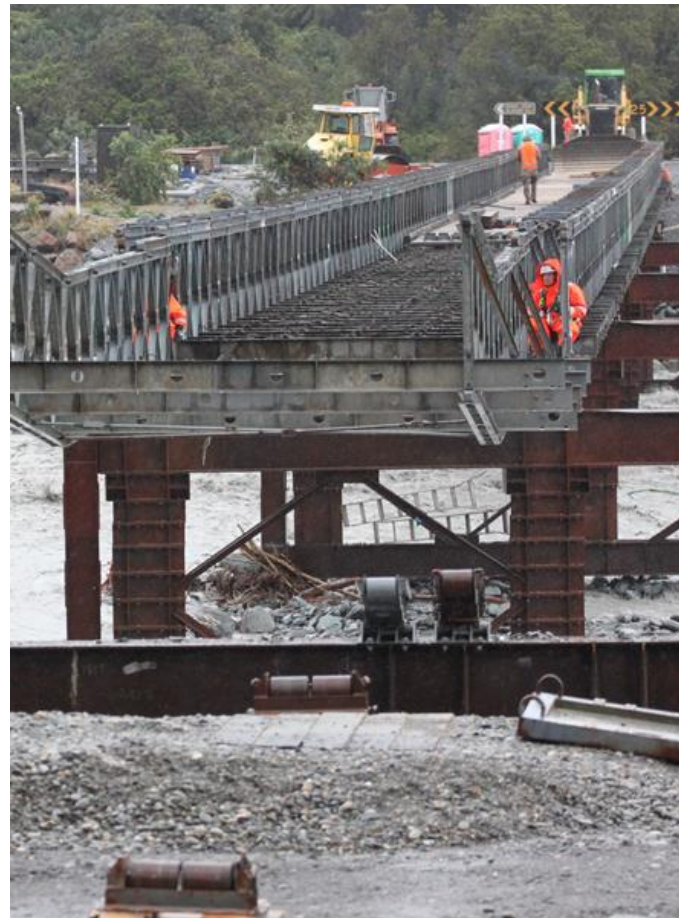
Waka Kotahi creating economic, environmental, social and cultural opportunities and benefits for Aotearoa

- **Environmental Outcomes** - We will protect & enhance natural and built environments.
- **Social & Economic Outcomes** - We will work with industry to develop the Sector and its workforce to drive social & sustainable outcomes
- **Community Outcomes** - We will empower our communities
- **Maori Outcomes** - We will partner with Māori

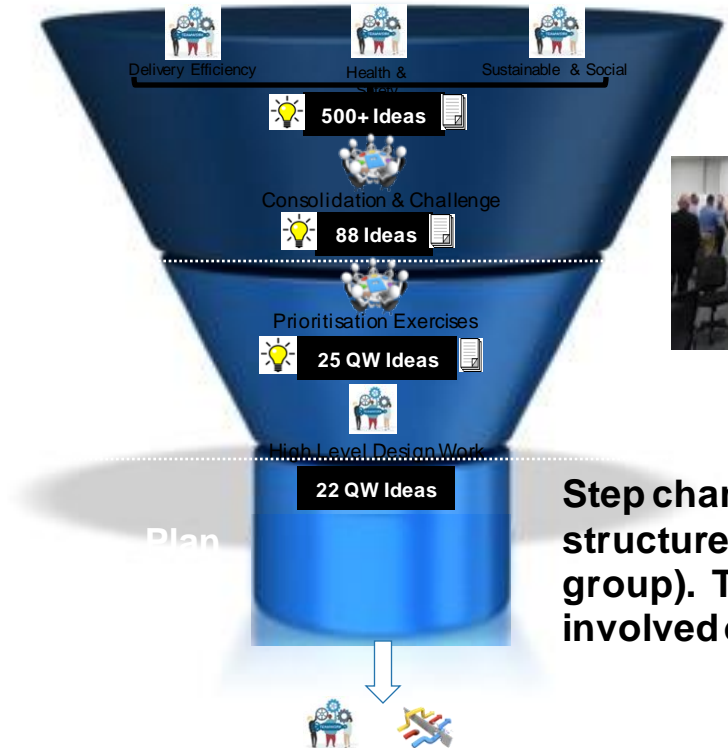


Turning Vision into Action

- Dedicated Step Change Team
- Co-design with sector – Design Sprints
- Embed in Procurement processes
- Agile approach to piloting and trialling
- Using research & evidence to direct our decision-making
- Constantly seeking national & international best practice (steal shamelessly)



NZUP Step Change Design Sprint : Approach



Step change ideas were developed through structured workshops and reviews (challenge group). The process generated over 500 ideas and involved over 100 SMEs from WK and industry

Social & Sustainable – Priority Initiatives

- Mandatory Environmental, Cultural and Social Standards
- Application of ISCA Sustainability Rating Tool
- Focus on environmental enhancement and regeneration
- Develop initiatives to implement the Broader Outcomes Framework/Procurement Strategy
- Funding for Community- Based Projects
- Identify and provide opportunities for community 'ownership' within the project
- Work with our construction teams to embed a 'guest in the community' mindset
- Hapū and Iwi (Treaty Partners) co-design and participation at all levels in NZUP
- Iwi Partnership Governance



Social & Sustainable – Longer Term Initiatives

- Identifying 'safe to try' pilot projects for environment innovation
- Environmental Strategy/Framework required for each project
- Incentivising use of local suppliers & materials within MRs
- Implementing Maori Procurement Strategy nationwide
- Facilitating community MCA processes within business cases
- Embed Te Ara Kotahi through NZUP
- Including story telling & history/values in the design process
- Having Te reo Māori bi-lingual road signage
- Implementing Māori scholarships for upskilling



What's Next

1. Detailed Implementation Plan
2. Update procurement process
3. Update Standards and Guidelines
4. Roll-out with Project teams and Industry
5. Wider communications

