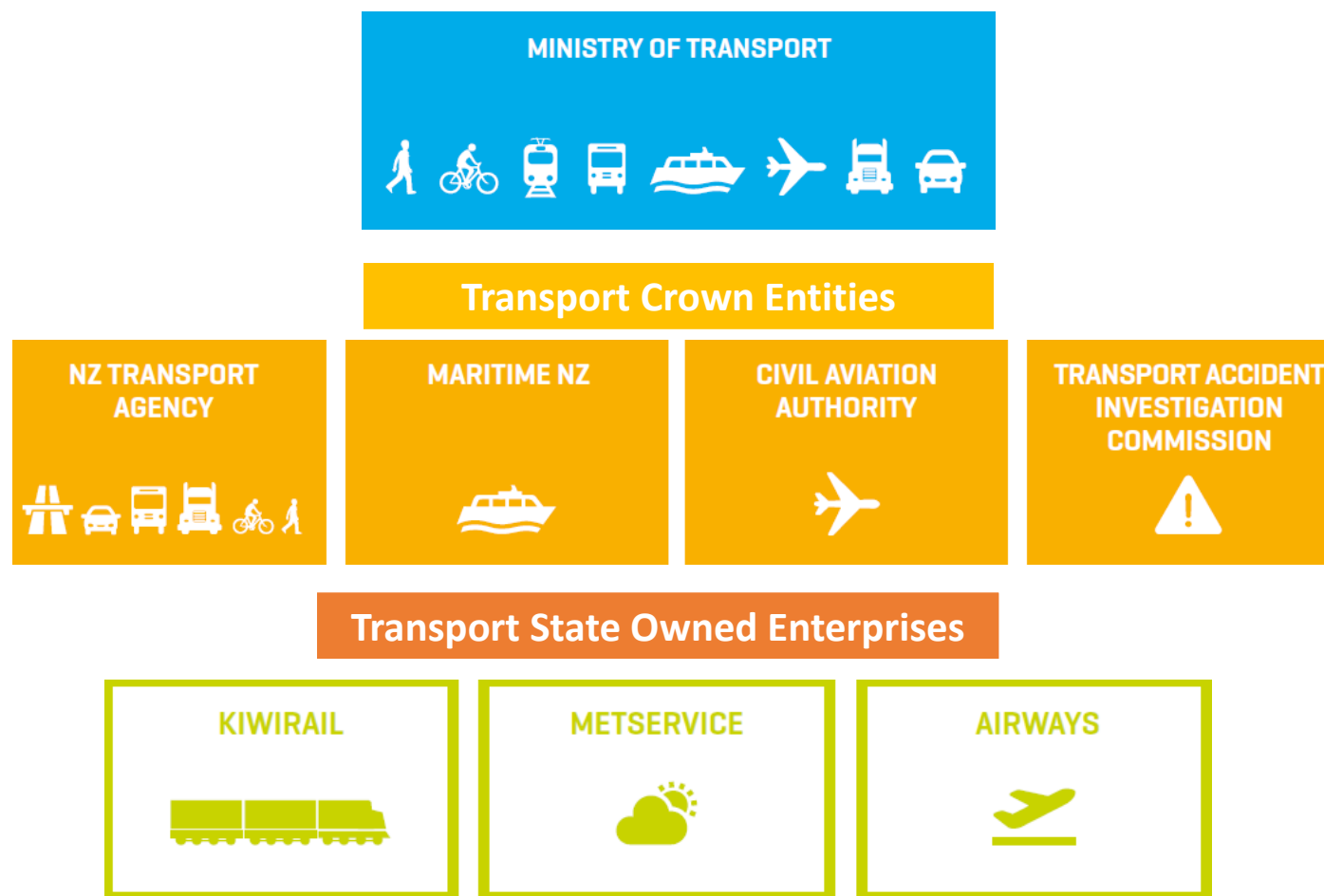


Unmasking transport governance

Tim Herbert

Manager, Domain Strategy Economics & Evaluation, Ministry of Transport

Government Transport Agencies



Transport Domain Plan & Research Strategy



Domain Plan - details the data and information gaps identified by the wider transport sector

Research Strategy - creates a research environment to ensure investment in the right research

Collectively these aim to ensure that the sector has the right data and information to support evidence-based decision-making

Transport Knowledge Hub



Communities to broaden research, evidence, analytics and modelling

A mechanism to connect public and private organisations

Collaborate to identify and prioritise data and research under the Transport Domain Plan and Research Strategy.

Transport Knowledge Conference – Thursday 15th November, Wellington

Email: knowledgehub@transport.govt.nz

Visit: <https://www.transport.govt.nz/resources/transport-knowledge-hub/>

International Connections

- **International Transport Forum**
- **Australian Transport Research Forum (ATRF)**
- **Dr Debbie Hopkins**
 - ▶ *Transport Studies Unit, School of Geography and the Environment, University of Oxford*

