



**MINISTRY OF BUSINESS,
INNOVATION & EMPLOYMENT**
HIKINA WHAKATUTUKI

Overview of MBIE funds

Transport Research Colloquium 14 November 2018

Sarah McDermott



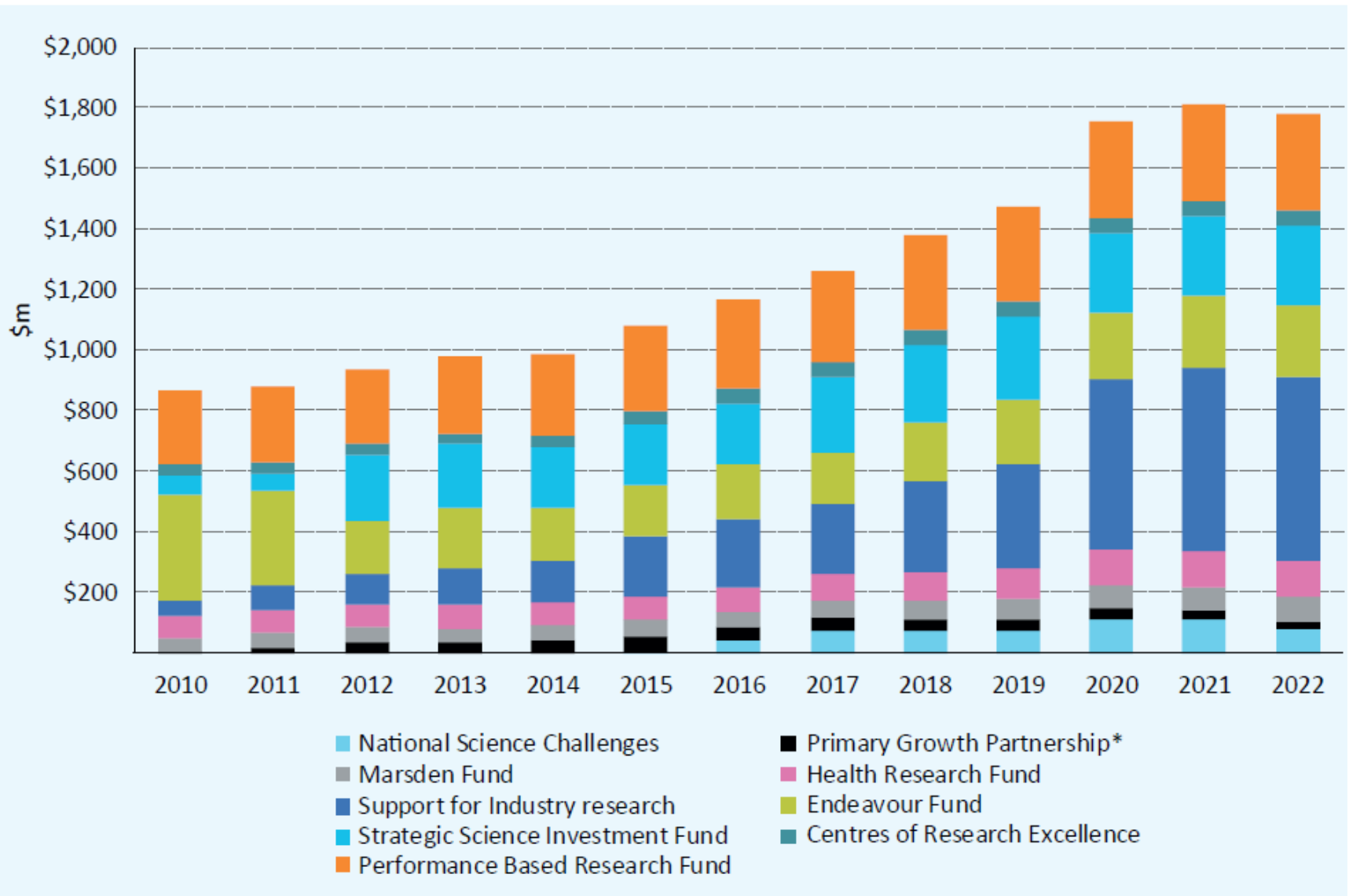
Government strategy



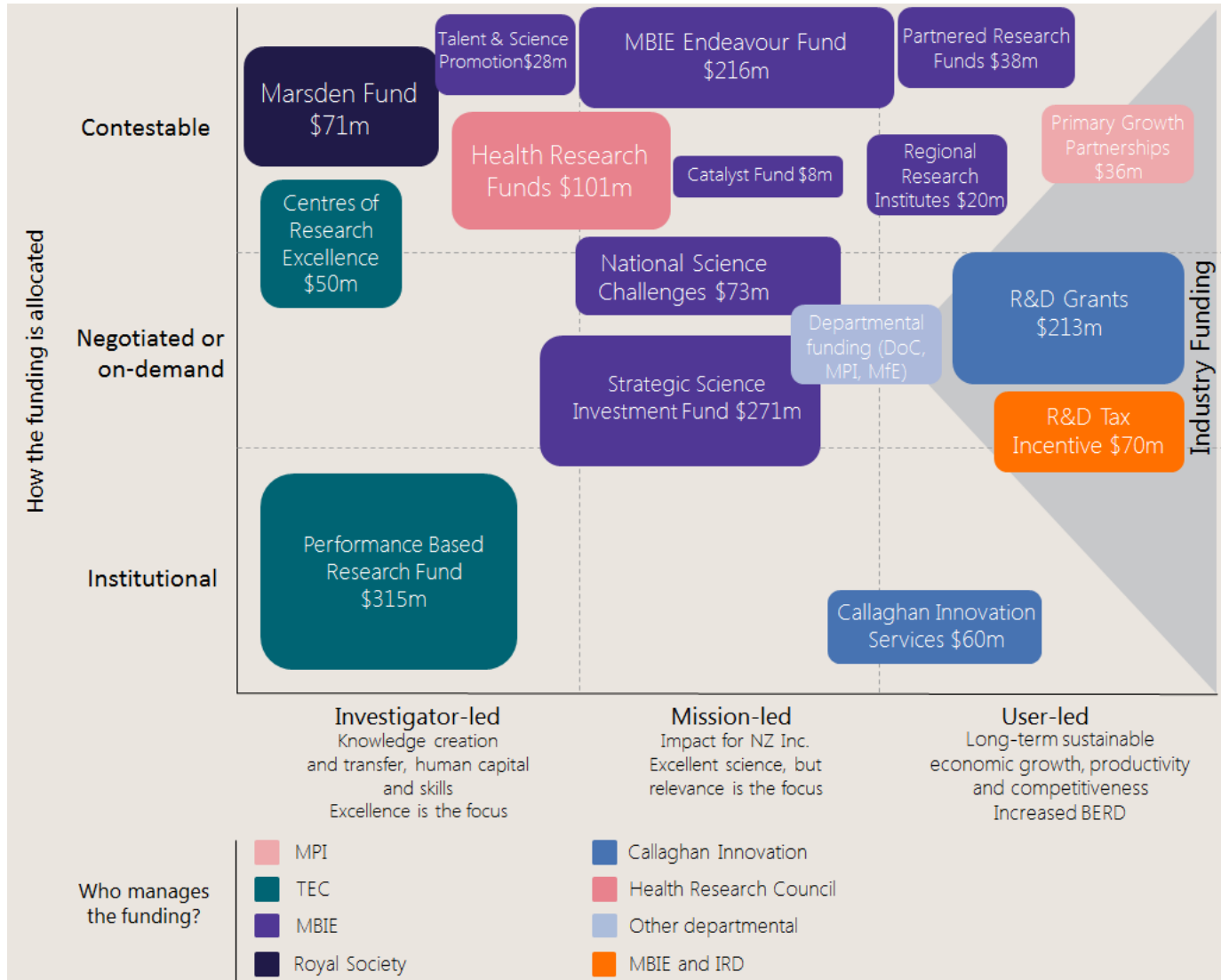
The Government's vision for New Zealand puts the long-term wellbeing of people and the environment at its centre. This includes priorities of reducing child poverty, access to affordable, healthy homes, opportunities for meaningful work, and a just transition to a sustainable, low-emissions economy.

- R&D to 2% of GDP
- New RS&I strategy being developed

Public funding through key mechanisms, actual and forecast



Government funding



Endeavour Fund

Smart Ideas provide for smaller investments intended to catalyse and rapidly test promising, innovative research ideas

- Two or three years
- \$400k - \$1 million

Research Programmes provide for larger investments intended to support ambitious, excellent and well-defined research ideas

- Three, four or five years
- \$500k or more per year, no upper limit

Summary of previous Endeavour rounds

Smart Ideas

	Number submitted	Number funded	Annual value
2017	250	41 (16.4%)	\$15.4 million
2018	254	46 (18.1%)	\$16.1 million

Research Programmes

	Number submitted	Number funded	Annual value
2017	158	27 (17.1%)	\$42.6 million
2018	145	23 (15.8%)	\$41.3 million

2019-2021 Endeavour Fund

What's the same

- Fund objectives
- Importance of Excellence and Impact
- Smart Ideas and Research Programmes
- Vision Mātauranga

What's changing

- Investment signals re-aligned to Government priorities
- The migration of funding from Research Programmes to Smart Ideas

What's new

- Proposals must be made under **'Transform'** or **'Protect and Add Value'**
- Team-impact track record
- Diversity information



Vision Mātauranga policy

Vision Mātauranga-related research may contribute to any or all of the following impacts for New Zealand:

- enhancing productivity and performance of Māori and non-Māori enterprise through new products, processes and services
- achieving environmental sustainability by exploring distinctive Māori relationships with the environment
- improving health¹ and social wellbeing for Māori, and
- generating new knowledge at the interface between indigenous knowledge and science and technology

¹ The Endeavour Fund does not fund research with the primary objective of health outcomes, but will support this as a secondary objective.

Investment Signals

General signals

- Excellent research, with high potential impact in areas of future value, growth or critical need for New Zealand
- Leverage wider investment and knowledge, in New Zealand and overseas
- Give effect to Vision Mātauranga
- Take account of broader Government policy and strategy documents

New signals - Future Value, Growth or Critical Need

- Creating and growing knowledge-intensive industries
- Supporting the transition to a low-emissions economy

Note: Endeavour will fund applications outside these signals

New 'Transform' category

- Research Programme Proposals the 'Transform' category
 - a. **Immediate impact.** Is the new, or changed, technology, process, practice, business model or policy, that is enabled by the research, a radical change and/or a leap in performance versus the status quo?
AND
 - b. **Ultimate impact.** Could the research ultimately lead to a transformational change within the New Zealand economy, society or environment by, for example, creating or disrupting economic activities, creating a new sustainable resource use or eliminating environmental damage, or changing the character of risks and opportunities faced by individuals and society?
- Proposals that do not meet both criteria should be made under the alternative 'Protect and add value' category

Other funding opportunities

- New Zealand Data Science Platform
(open late-October 2018)
- Vision Mātauranga Capability Fund
(opens November 2018)
- PreSeed Accelerator Fund
(opening late 2018)
- Commercialisation Partner Network
(opening late 2018)

Visit the MBIE website for more information and subscribe to the MBIE Alert e-newsletter for updates

Thank you

