

Transport Trends



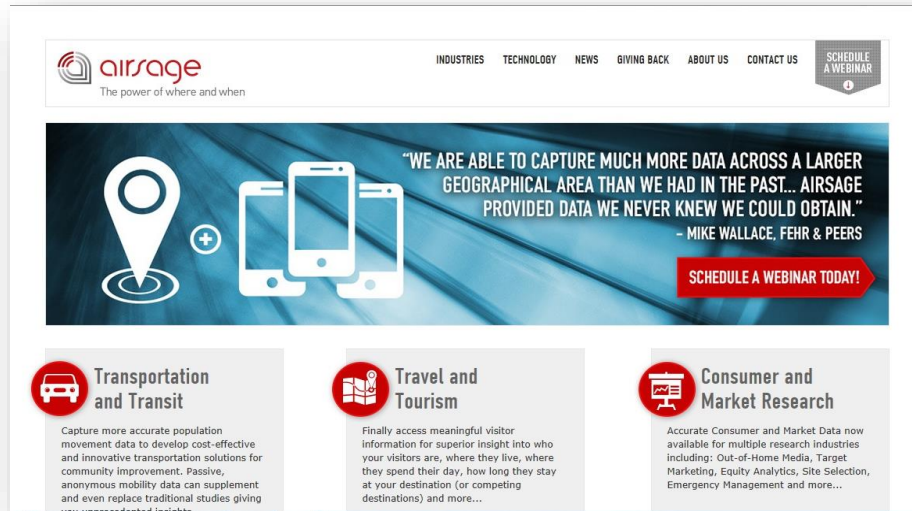
Current Trends - *Change and Disruption*

Increasing congestion in cities - connected and autonomous vehicles - decline in auto ownership by millennials - stagnation in public transport - growth of transportation network companies...

Current Trends - *Opportunities*

New data sources to better understand mobility patterns – big data analytics and spatial analysis – breaking down the silos – smart cities and smart transportation

New Data Sources



The banner features the Airsage logo with the tagline "The power of where and when". Navigation links include INDUSTRIES, TECHNOLOGY, NEWS, GIVING BACK, ABOUT US, CONTACT US, and a SCHEDULE A WEBINAR button. The main headline reads: "WE ARE ABLE TO CAPTURE MUCH MORE DATA ACROSS A LARGER GEOGRAPHICAL AREA THAN WE HAD IN THE PAST... AIRSAGE PROVIDED DATA WE NEVER KNEW WE COULD OBTAIN." attributed to Mike Wallace, Fehr & Peers. A "SCHEDULE A WEBINAR TODAY!" button is present. Below the banner are three categories: Transportation and Transit, Travel and Tourism, and Consumer and Market Research, each with a brief description of the data provided.

air sage
The power of where and when

INDUSTRIES TECHNOLOGY NEWS GIVING BACK ABOUT US CONTACT US SCHEDULE A WEBINAR

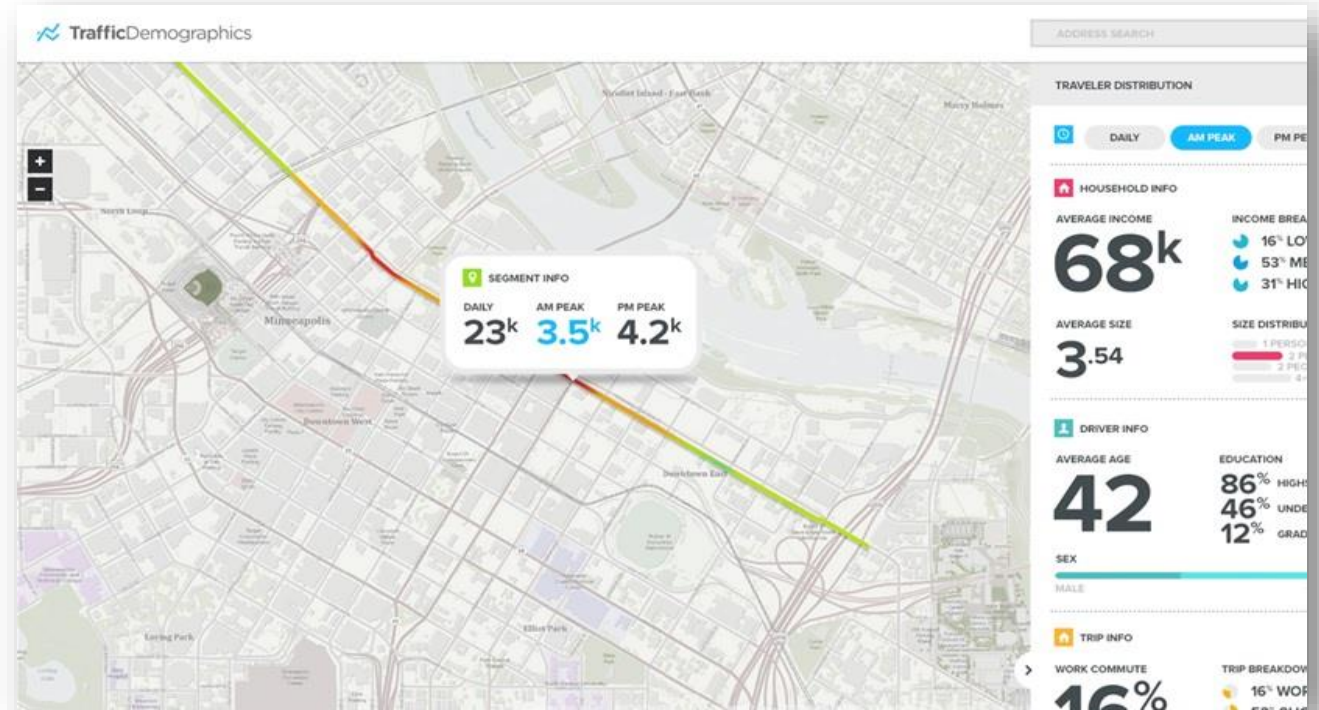
"WE ARE ABLE TO CAPTURE MUCH MORE DATA ACROSS A LARGER GEOGRAPHICAL AREA THAN WE HAD IN THE PAST... AIRSAGE PROVIDED DATA WE NEVER KNEW WE COULD OBTAIN."
- MIKE WALLACE, FEHR & PEERS

SCHEDULE A WEBINAR TODAY!

Transportation and Transit
Capture more accurate population movement data to develop cost-effective and innovative transportation solutions for community improvement. Passive, anonymous mobility data can supplement and even replace traditional studies giving...

Travel and Tourism
Finally access meaningful visitor information for superior insight into who your visitors are, where they live, where they spend their day, how long they stay at your destination (or competing destinations) and more...

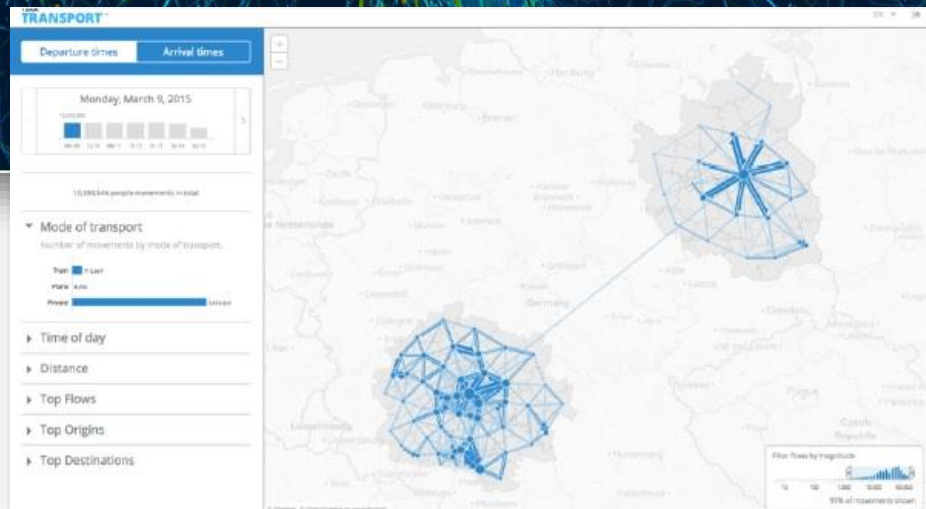
Consumer and Market Research
Accurate Consumer and Market Data now available for multiple research industries including: Out-of-Home Media, Target Marketing, Equity Analytics, Site Selection, Emergency Management and more...



New Data Sources

TERALYTICS MOBILITY INSIGHTS

Human Behavior from Telecom Data



[Home](#) [Location Data](#) [Careers](#) [Blog](#)

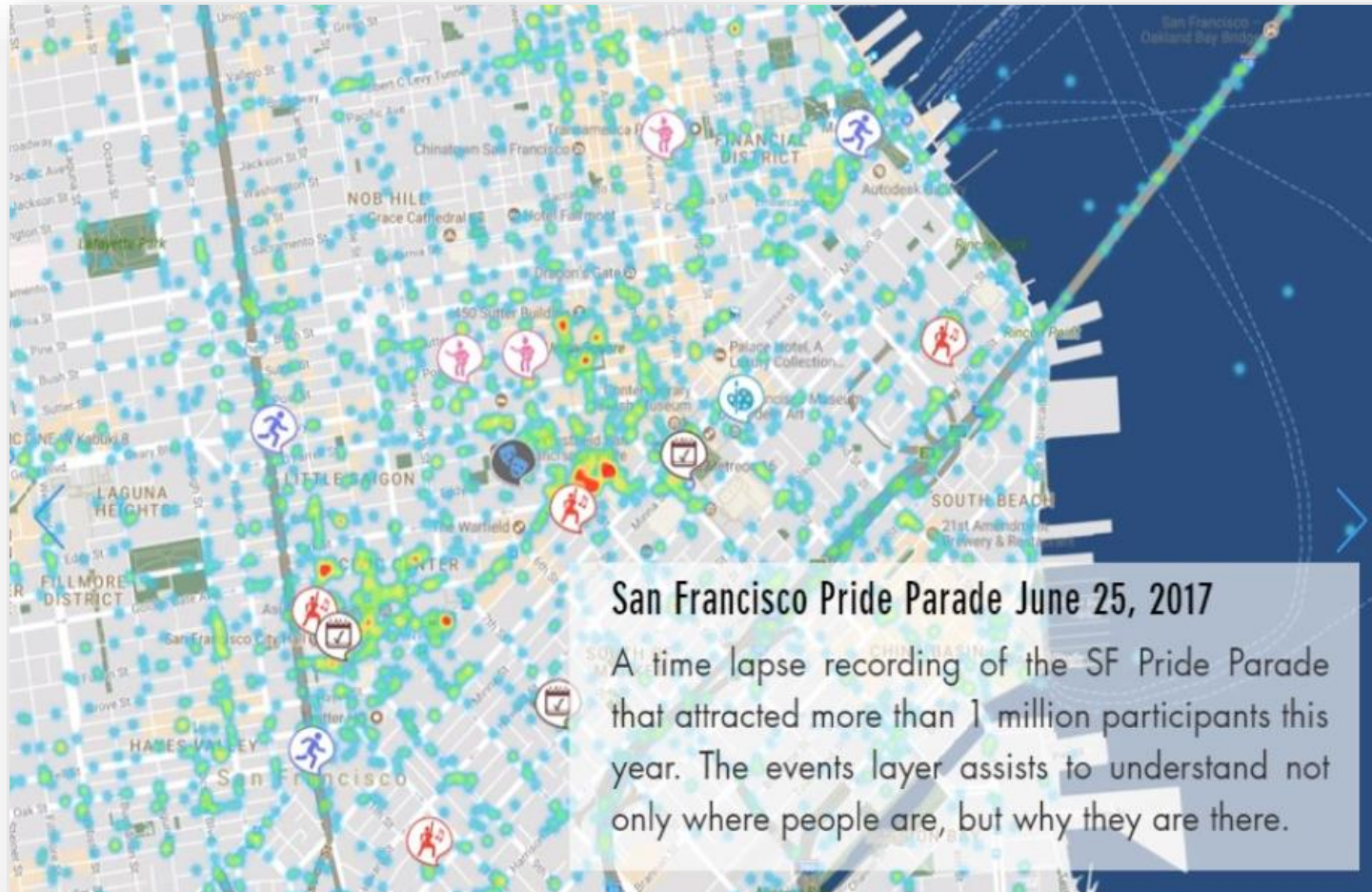
WE PREDICT THE PAST.

SafeGraph is unlocking the world's most powerful data so that machines and humans can answer society's toughest questions.



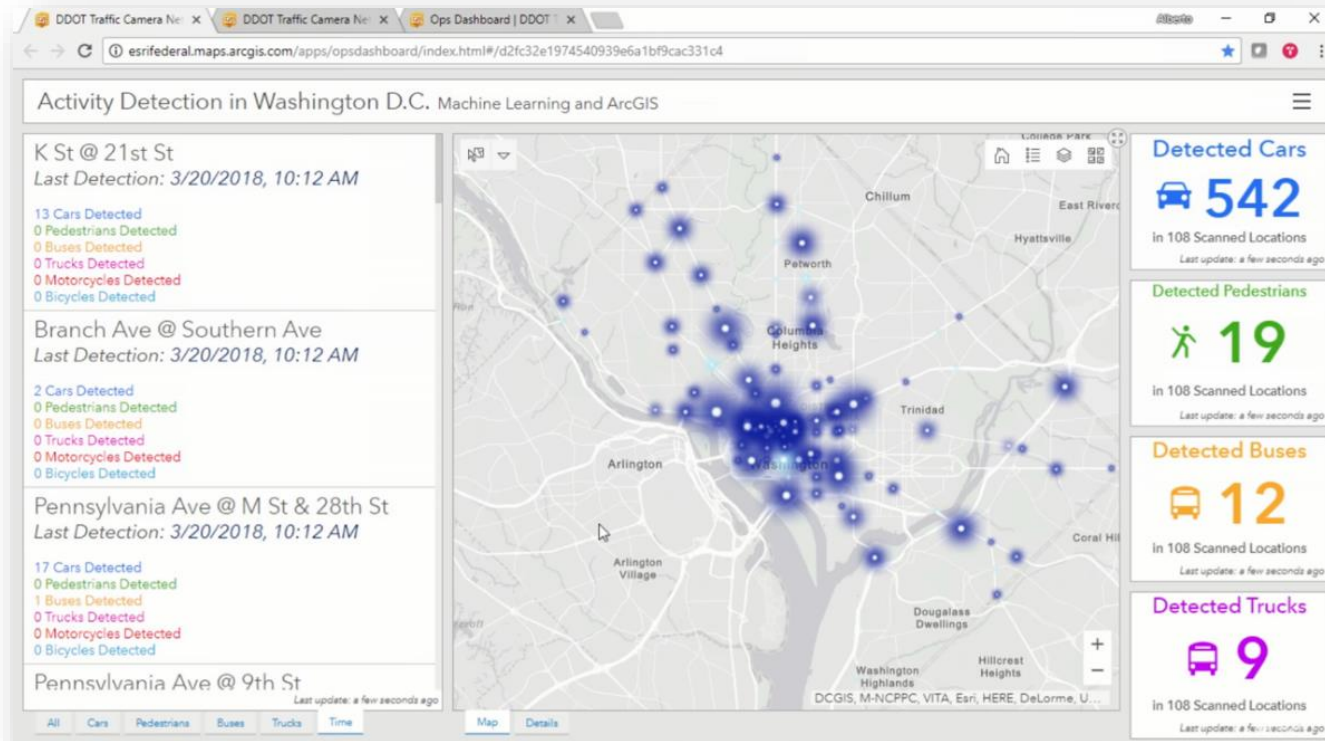
SAFEGRAPH

New Data Sources



DOWNTOWN.AI

New Data Sources



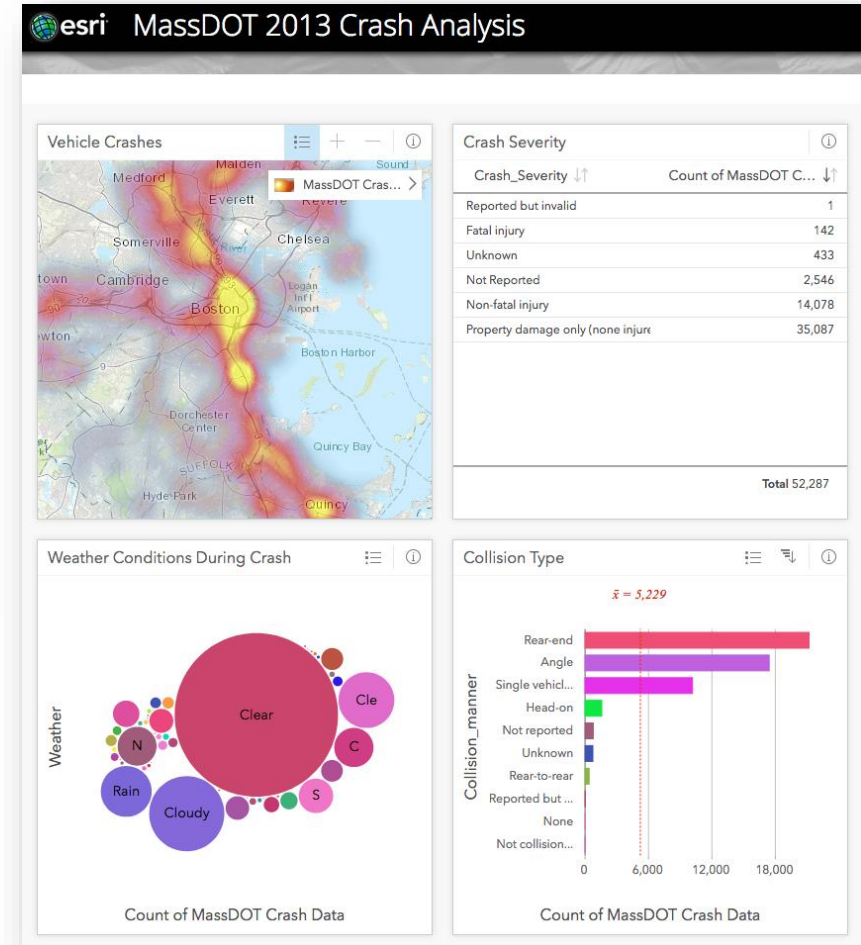
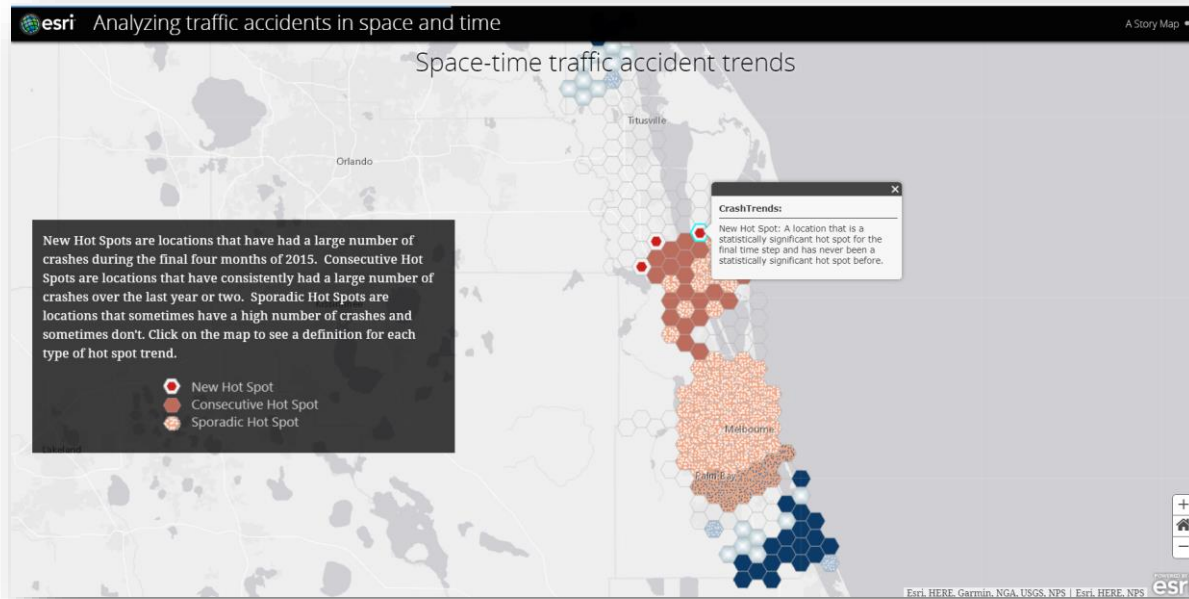
Leveraging Traffic Cameras for Real Time Counts
and Speed Data

Big Data Transport Trends

**Three V's of Big Data:
Volume – Velocity - Variety**

**Sensor Information generating massive
amounts of data magnifies the problem of
understanding and context**

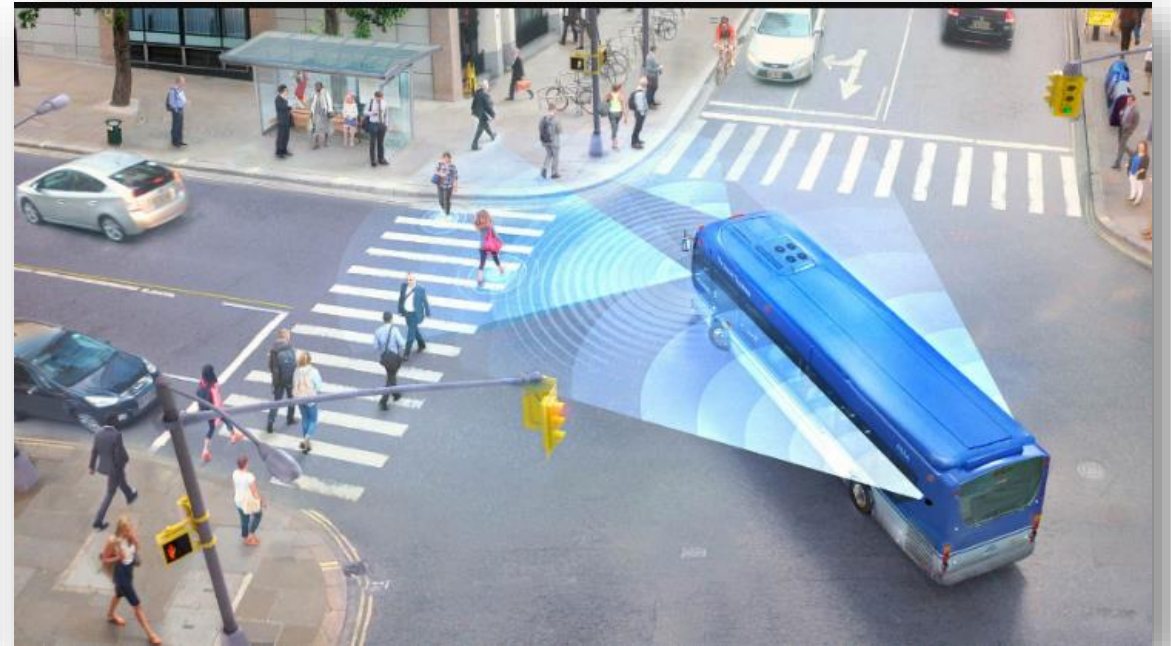
Big Data



Big Data GeoAnalytics
Esri's new IoT platform
Esri Insights
Space Time Cube

Big Data & Machine Learning

New York City Buses & Cabs equipped with Mobileye
Use of Machine Vision / Learning to Identify Pedestrians



Analyzing Trends

PEDESTRIAN COLLISION ALERTS

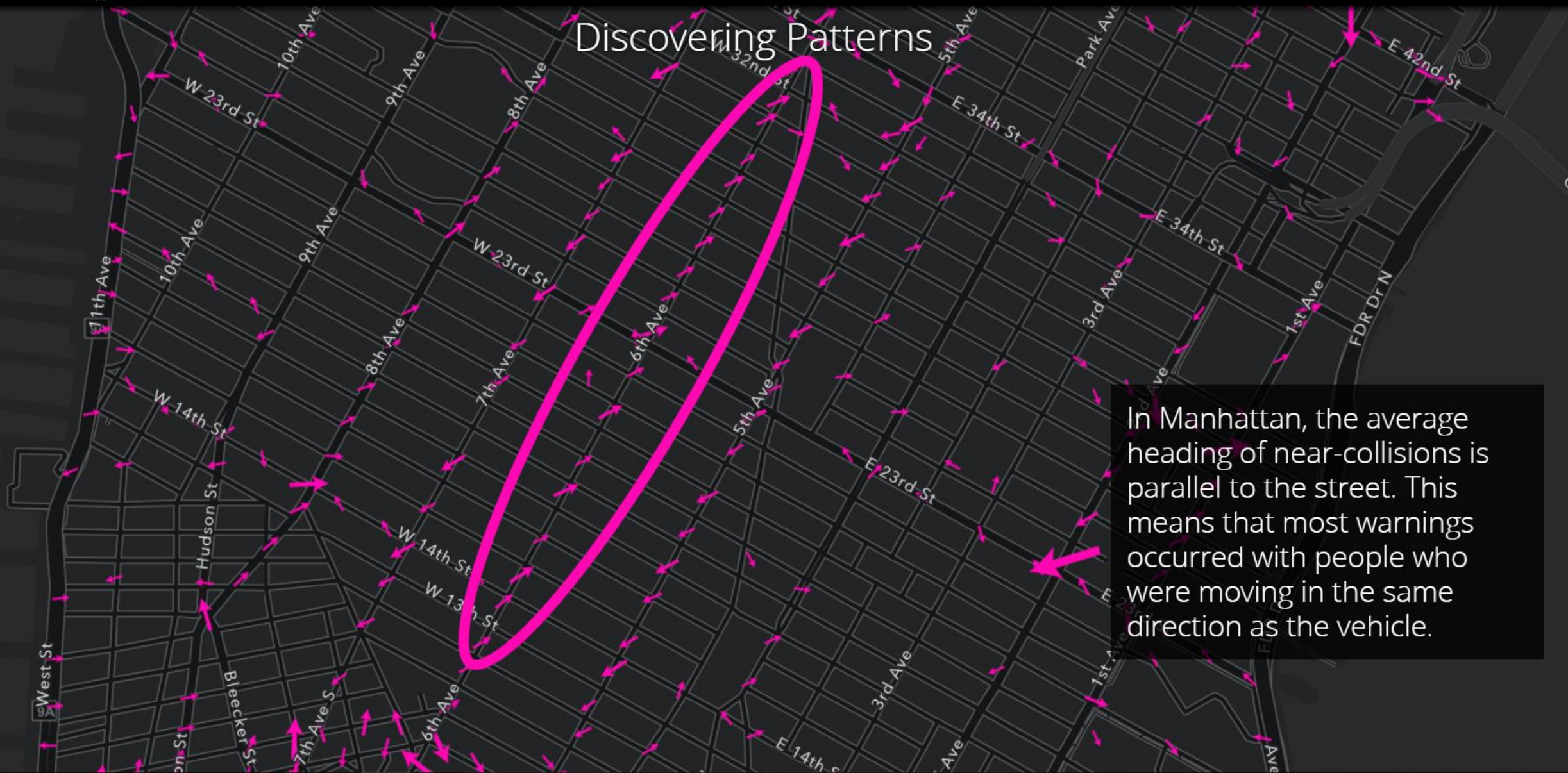
6:00 AM - 7:00 AM

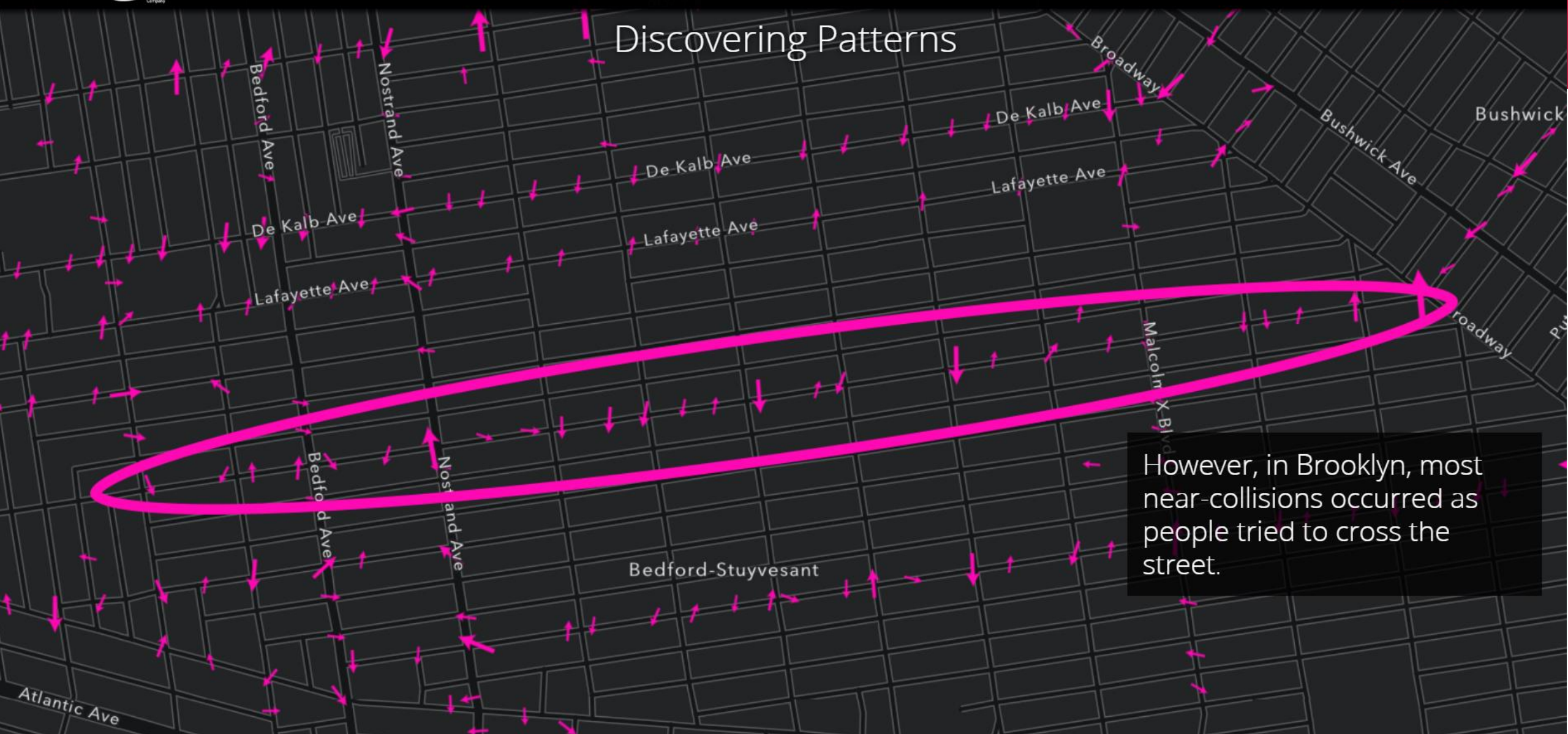
Powered by Esri

This mesh view highlights where near-collisions occur throughout the day. Click on the explore button on the bottom right to interact with the map.

Explore

Discovering Patterns





NEWS

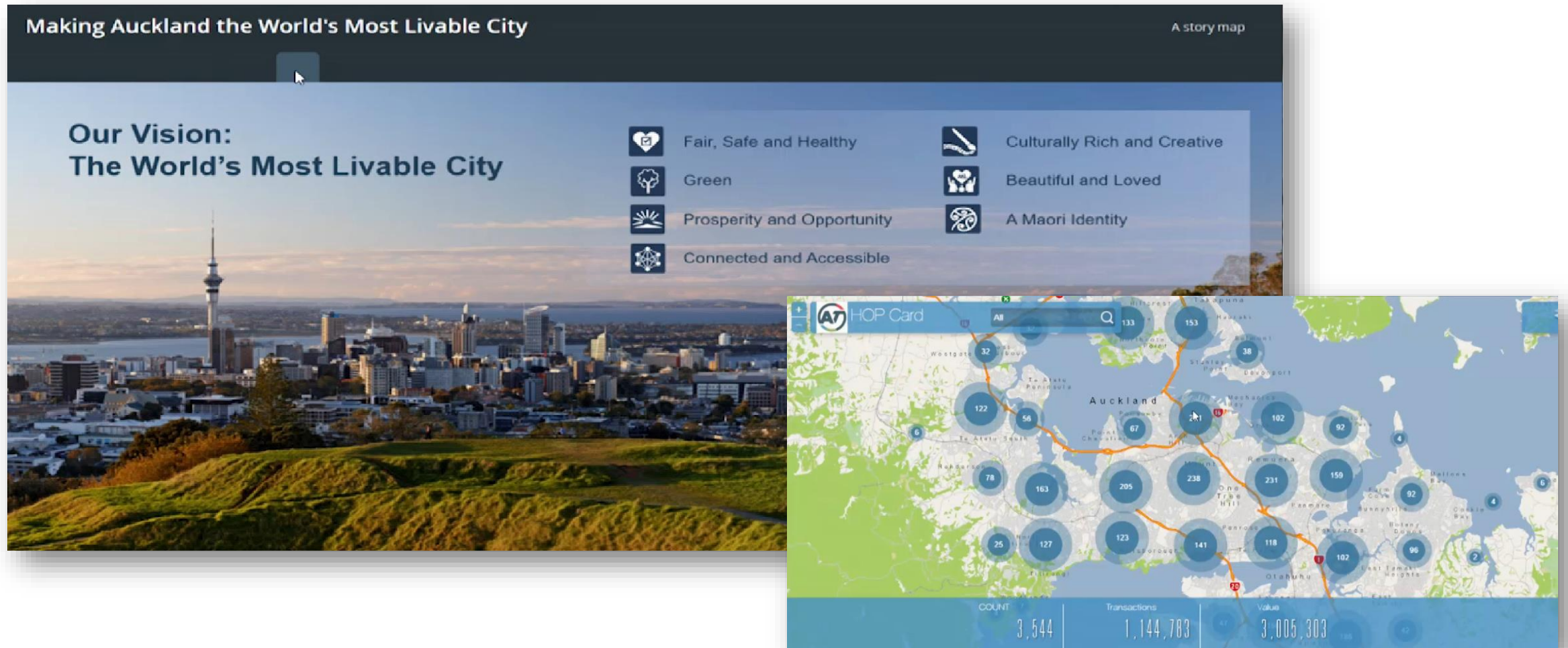
NYC's pedestrian fatalities reached an all-time low in 2017

Mayor Bill de Blasio announced that under Vision Zero, traffic-related deaths are down overall

By **Ameena Walker** | Jan 8, 2018, 12:15pm EST

Breaking down the silos

Breaking down Silos



Breaking down Silos



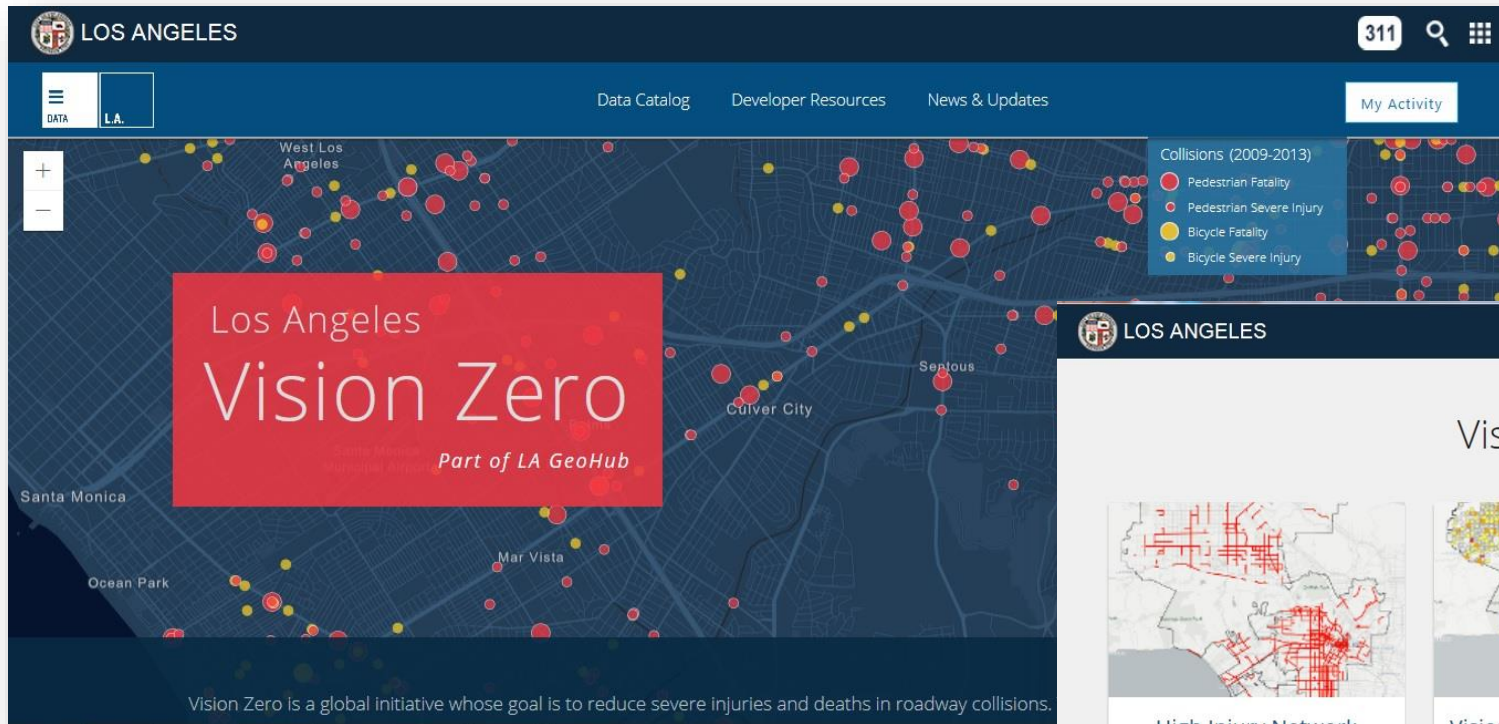


Transportation Trends / July 2018



Smart Cities

Smart Cities



The screenshot shows the 'Vision Zero Maps & Applications' page. It features a header with the Los Angeles logo, a '311' button, a search icon, and a grid icon. Below the header, the title 'Vision Zero Maps & Applications' is displayed. The page contains four main sections, each with a map thumbnail, a title, a description, and two buttons ('Open' and 'Details').

High Injury Network	Vision Zero: A Data-Driven Approach	Vision Zero Los Angeles	Collision Landscape in Los Angeles
This Story Map explores the High Injury Network in relation to health outcomes and other ongoing strategic planning efforts.	A walk through of Los Angeles' data-driven approach to Vision Zero.	The plan to eliminate traffic fatalities in the City of Los Angeles by 2025.	Five years of fatal and severe crashes involving pedestrians or bicyclists (2009-2013).
Open Details	Open Details	Open Details	Open Details

City of Los Angeles

Is Already Implementing a Community GIS

Solutions Cross Departments



Expanding Their GIS to Support Everyone



Smart GIS Enables New Types of Collaboration

Connecting Individuals, Organizations and Communities



... Creating a Nervous System for Our Planet

Smart Cities

San Francisco Planning Department

Edit



No issues detected

1. URBAN CONTEXT

These maps represent the physical and regulatory context of the city. Click on the buttons below to see the city in various ways.

Traditional maps were 2-dimensional and static, representing a limited view fixed in time.

Traditional 2D Map

Dynamic 3-dimensional scenes allow you to 'mash up' visual information to see the city in a new way. These buildings represent the city schematically and make a great base for visualizing information.

3D Schematic View

These buildings represent the city realistically and help provide a sense of place – the feeling of understanding a real place, even if virtually.

3D Realistic View

Volumes of current height districts can be shown along with realistic buildings.

Current Height Districts


While current land use can be visualized on the buildings themselves.

Current Land Use by Building

2. UNDERSTANDING GROWTH CAPACITY

The next few sections show how much capacity is possible at three important scales – at the neighborhood level, by transportation analysis zone, and by parcel. It is easier to see patterns when the data is shown at a parcel level, but more difficult to understand overall totals at the neighborhood level. Transportation analysis zones (TAZ)

BACK



The future of transport is...