

Transport Evidence Based Strategy

Improving the way we use evidence and make decisions in transport



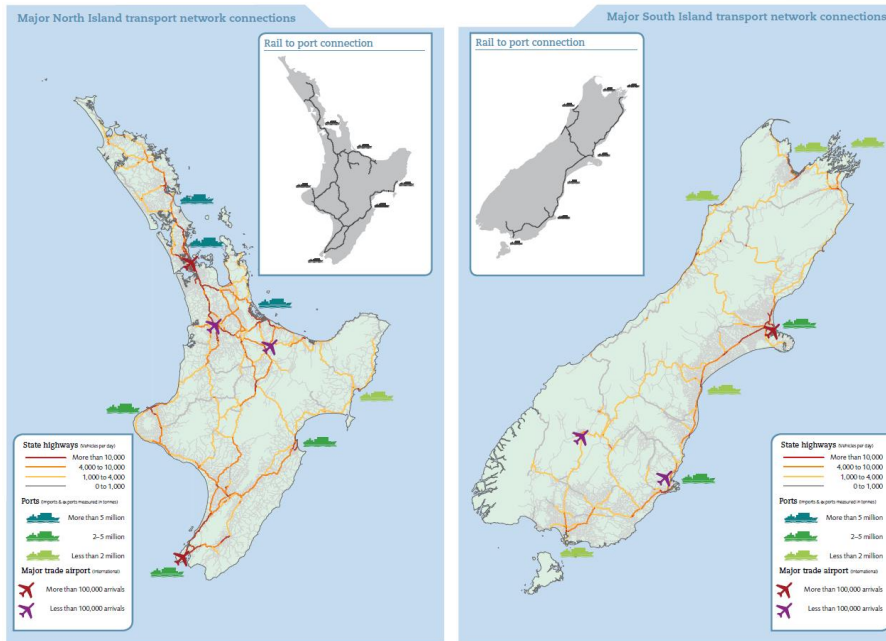
The transport system...



Is a combination of networks – we need all the parts to work

AND

Interacts with and supports other domains across NZ society



The Four Capitals

Intergenerational wellbeing relies on the growth, distribution, and sustainability of the Four Capitals. The Capitals are interdependent and work together to support wellbeing.



Natural Capital

This refers to all aspects of the natural environment needed to support life and human activity. It includes land, soil, water, plants and animals, as well as minerals and energy resources.



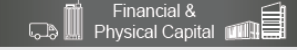
Social Capital

This describes the norms and values that underpin society. It includes things like trust, the rule of law, the Crown-Māori relationship, cultural identity, and the connections between people and communities.



Human Capital

This encompasses people's skills, knowledge and physical and mental health. These are the things which enable people to participate fully in work, study, recreation and in society more broadly.



Financial & Physical Capital

This includes things like houses, roads, buildings, hospitals, factories, equipment and vehicles. These are the things which make up the country's physical and financial assets which have a direct role in supporting incomes and material living conditions.

Transport Outcomes Framework



Inclusive access

Enabling all people to participate in society through access to social and economic opportunities, such as work, education, and healthcare.

Economic prosperity

Supporting economic activity via local, regional, and international connections, with efficient movements of people and products.

Healthy and safe people

Protecting people from transport-related injuries and harmful pollution, and making active travel an attractive option.

Environmental sustainability

Transitioning to net zero carbon emissions, and maintaining or improving biodiversity, water quality, and air quality.

Resilience and security

Minimising and managing the risks from natural and human-made hazards, anticipating and adapting to emerging threats, and recovering effectively from disruptive events.

A transport system that improves wellbeing and liveability

The transport outcomes framework



- Being applied by **all government transport sector agencies**
- Guiding thinking, policies, planning, funding, research
- Intended to be **enduring** while recognising each Government will have its own priorities

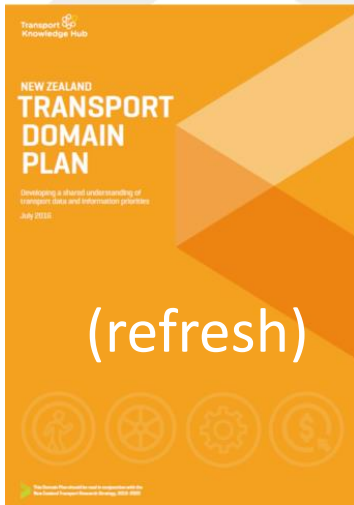


Transport Evidence Base Strategy

Government's Overall Goal

Transport Sector Outcomes

Transport Evidence Base Strategy(in draft)



Evaluation
Strategy
(in draft)

Information
Strategy and
Architecture
(in draft)

Modelling
Strategy
(scoping)

Developing the transport evidence-base

Goal:

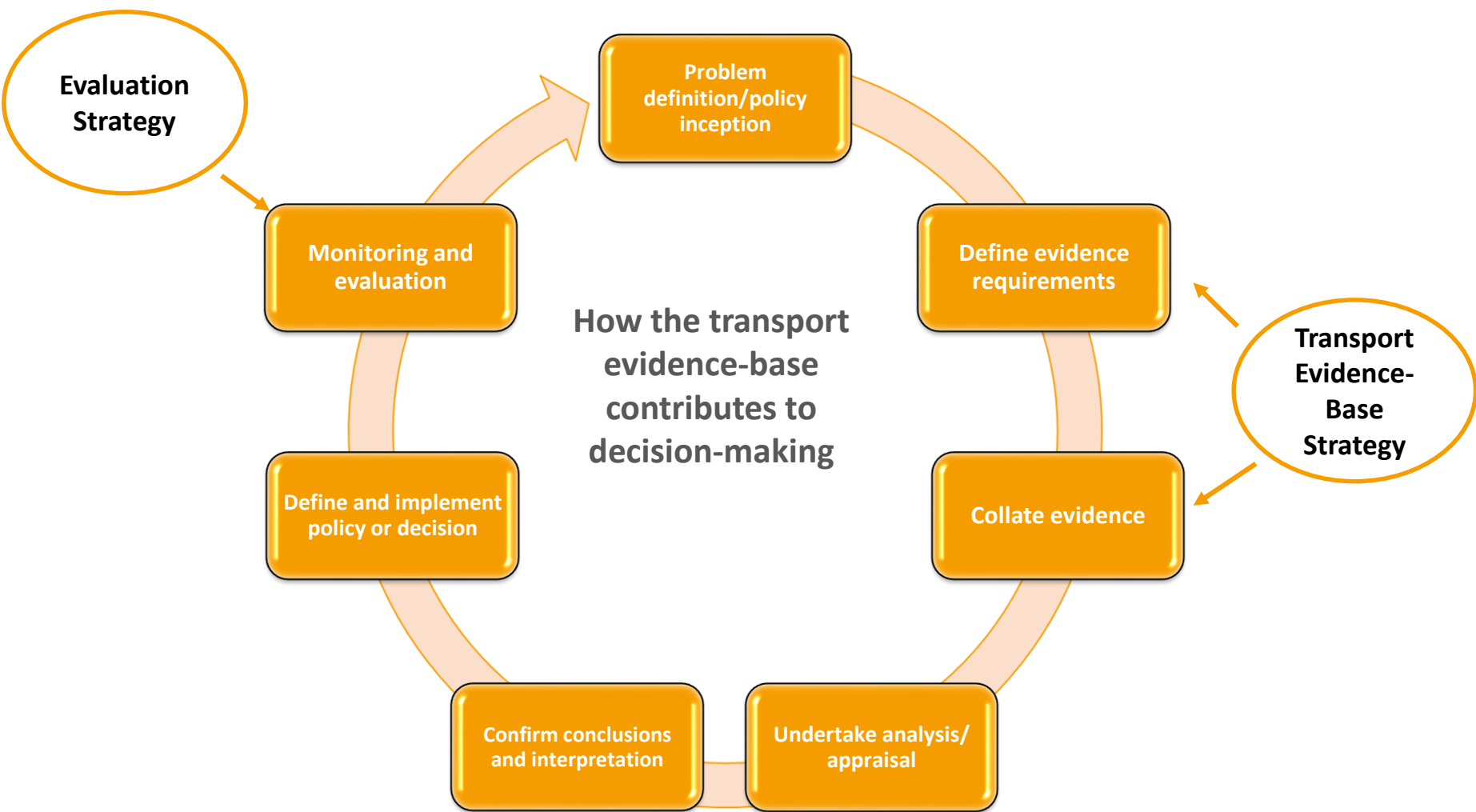
Ensuring the transport sector has the right data, information, research and evaluation to deliver an evidence-based transport system that improves wellbeing and liveability.

Objectives:

1. Ensure the right data, information, research and evaluation ('the evidence-base') is available for decision-making
2. We have an established culture of evidence-based policy and decision-making

Why do we need a strategy?





Strategy highlights

- **It's all in one place – one single document**
- **Aligned with the new Transport Outcomes Framework**
- **Includes:**
 - Revalidation of the enduring questions
 - 'Refreshed' Domain Plan and Research Strategy
 - New Evaluation Strategy
 - Top 12 priority 'evidence' initiatives
 - New list of research priorities
 - Updated 3-Step framework (replaces the Triple-4)
 - New 'priority assessment template'
 - Recommended set of actions
 - Introduces 5 key 'implementation' enablers

Five Transport Evidence Base Enablers

Improve access

Data, research and evaluation findings are discoverable, accessible and reusable

Improve governance

Ensure sharing, integration, and governance of key data and information products

Invest in the right activities

We invest in the right data, research and evaluation activities and projects

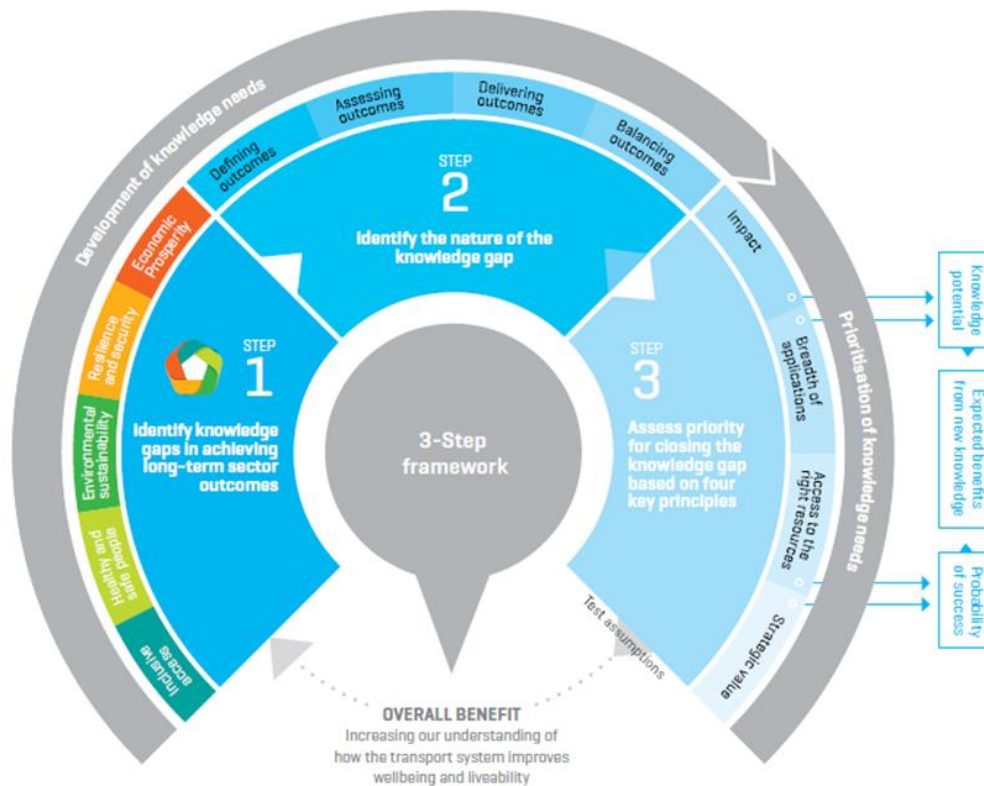
Facilitate collaboration

Foster cross-agency collaboration and relationships with the wider transport sector

Develop capacity and capability

Ensure the sector has access to the right skills and knowledge

3-Step Prioritisation Framework



Priority Assessment

1. Define topic

- ▶ *Identify and define the purpose of the data, information, research or evaluation project*




2. Identify knowledge gap:

- ▶ *the associated enduring question*
- ▶ *whether it aligns with a known knowledge gap and recommended initiative*
- ▶ *size of the knowledge gap (i.e. small, medium or large gap)*
- ▶ *if it aligns with a high-priority initiative or research priority*
- ▶ *if it is a new knowledge gap not previously identified*

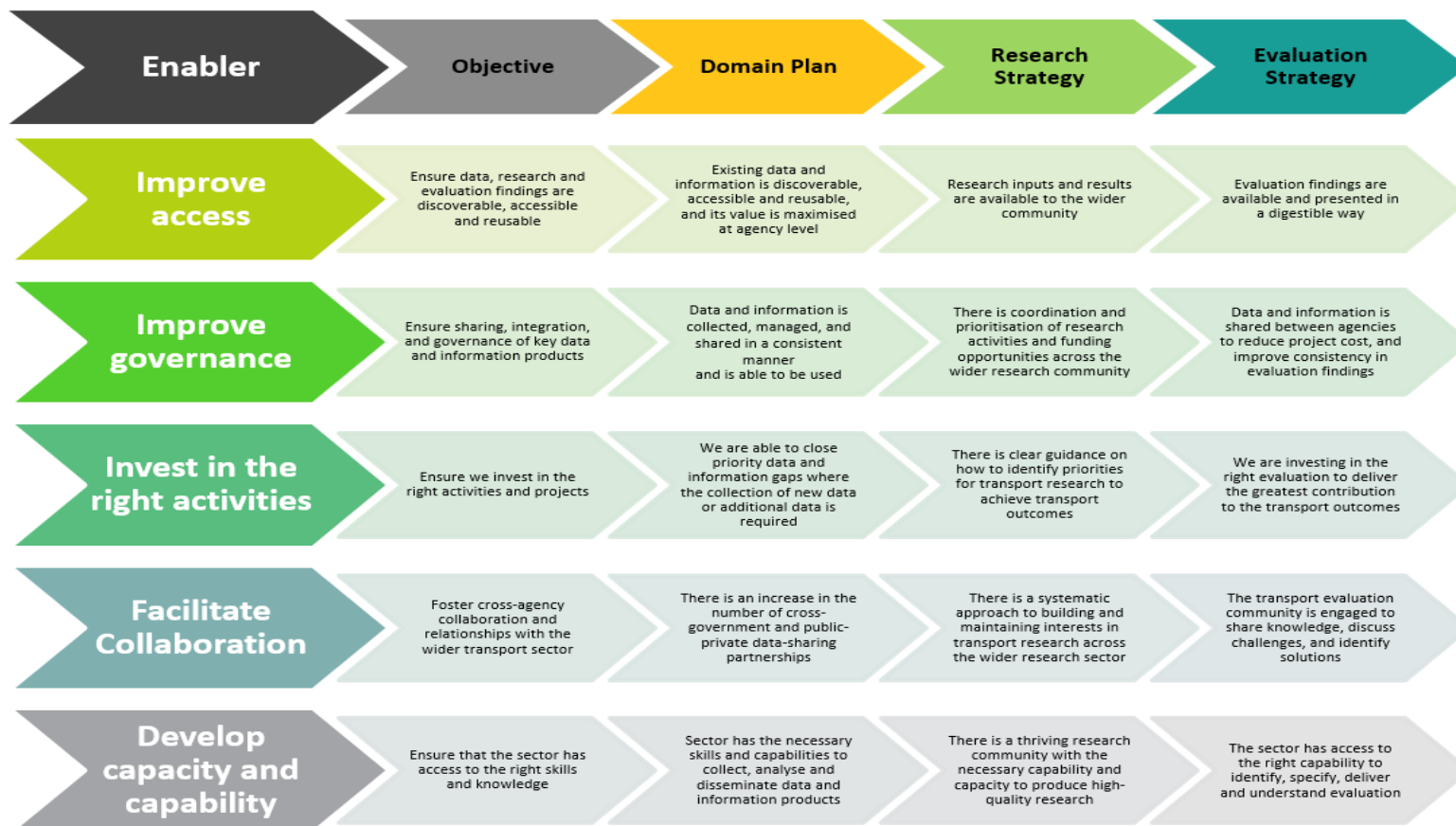
3. Apply the 3-step framework

4. Seek stakeholder feedback through appropriate agency and/or Topic Hub

Priority Assessment Template

Overview		
Purpose	{please complete}	
Research question	{please complete}	
Problem definition and knowledge development opportunity	{please complete}	
Response	{please complete}	
Related enduring question and/or recommended initiatives	{please complete using Transport Domain Plan} {e.g. EQ2.1, EQ2.3, EQ10.2 R10.1 (High priority), R2.14 (High priority)}	
Estimate of effort/cost	{please complete}	
Prioritisation assessment		
	{please complete}	
	{please complete}	
	Impact	{please complete} H/M/L*
	Breadth of application	{please complete} H/M/L*
	Access to right resources	{please complete} H/M/L*
	Strategic value	{please complete} H/M/L*

Assessing success



Developing an evidence-based culture.....



© Scott Adams, Inc./Dist. by UFS, Inc.

Transport Knowledge Hub



Transport Knowledge Conference

5th December 2019

Wellington

knowledgehub@transport.govt.nz

Questions for discussion



- **What types of evidence are most useful to you?**
- **What evidence gaps need closing? What could you use more of?**
 - Data
 - Skills and capability
 - Research
 - Evaluation
- **How could we use evidence more effectively?**