



# Network Analysis

Transport Strategy

Wellington City Council

2018

**Absolutely Positively**  
**Wellington** City Council

Me Heke Ki Pōneke

# TRANSPORT PRIORITIES

---



**Growth:** The transport system is capable of accommodating a growing population



**Environmental Sustainability:** Reducing CO2 emissions and other impacts of transport



**Liveable city:** Streets as places for people

**Healthy city:** Streets that support active modes



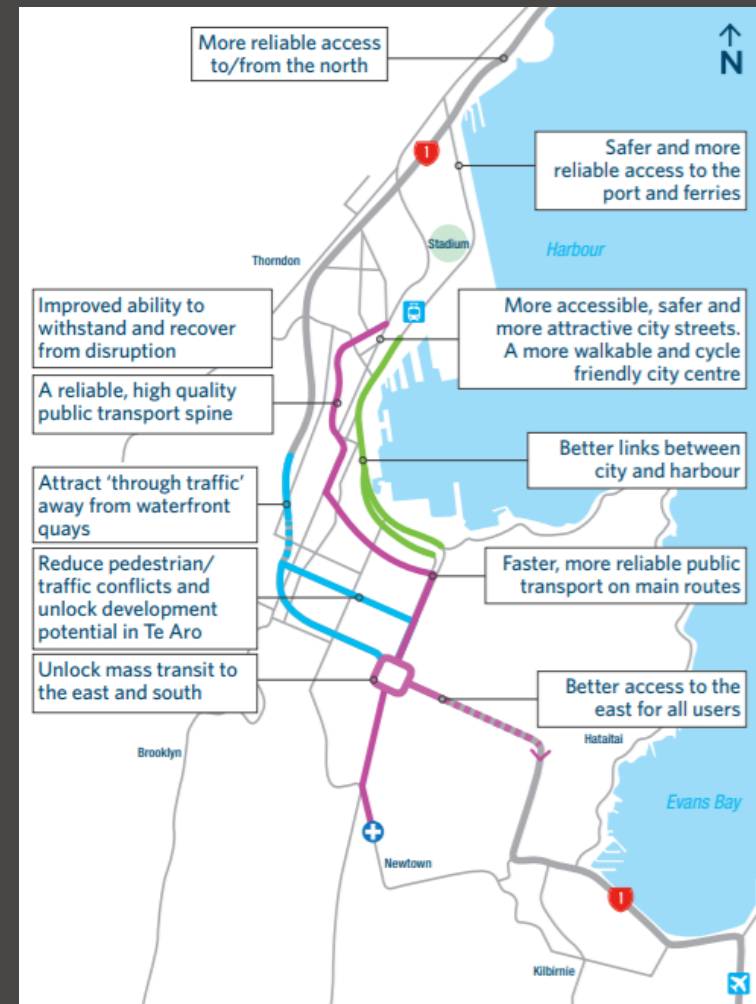
**Resilient city:** The transport system can cope with incidents, climate change and new technologies

# LET'S GET WELLY MOVING

## Objectives

### Provide a transport system that.....

- enhances the **liveability** of the central city
- provides more efficient and reliable access to **support growth**
- **reduces reliance on private vehicle** travel
- is **adaptable** to disruptions and future uncertainty
- improves **safety** for all users

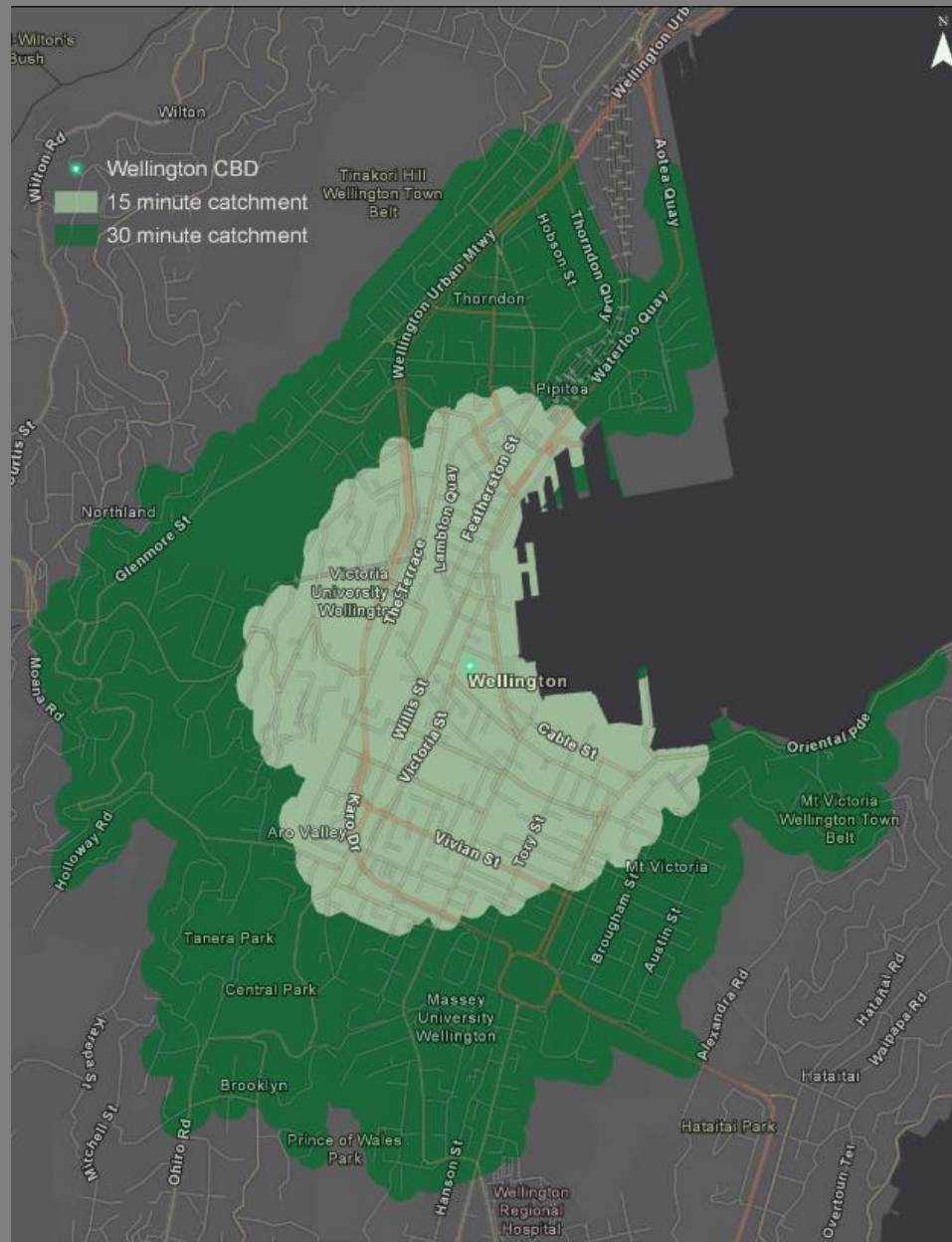


# CATCHMENT ANALYSIS

---

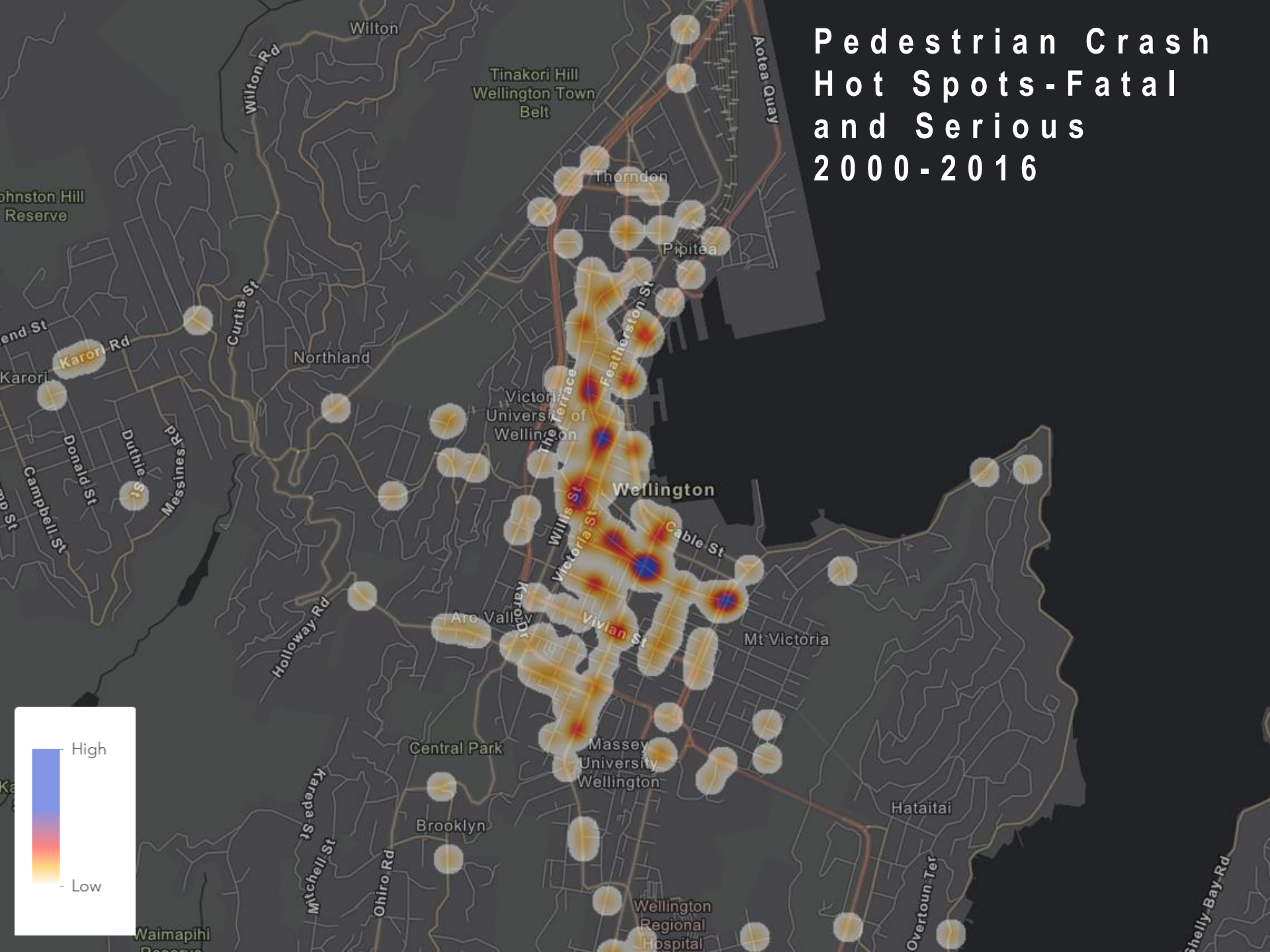
- **Visualise coverage of the transit network**
- **Various travel modes and speeds**
- **15 and 30 minute service areas**
- **AM peak (8am) – travel towards CBD (Civic centre)**
- **Incorporate demographic data (Census 2013) and .iD forecasts**

# WALKING CATCHMENT (inbound CBD)

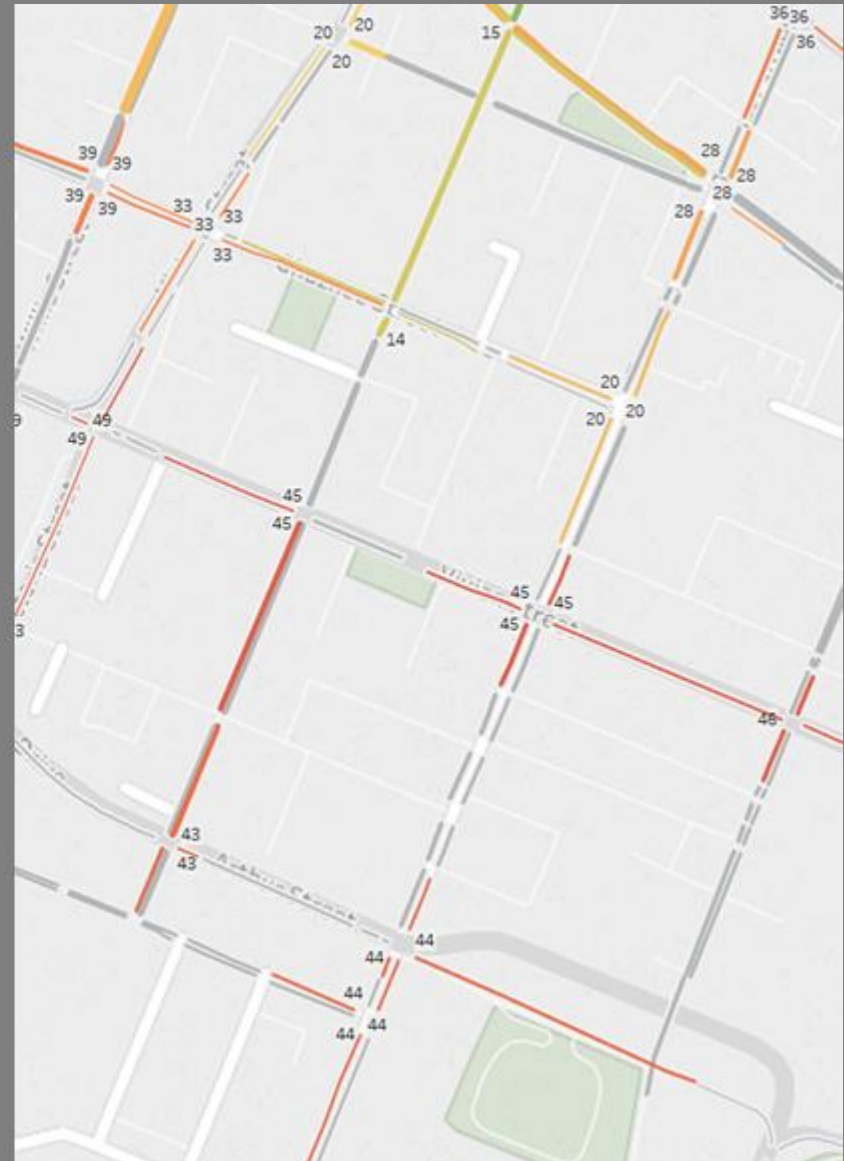
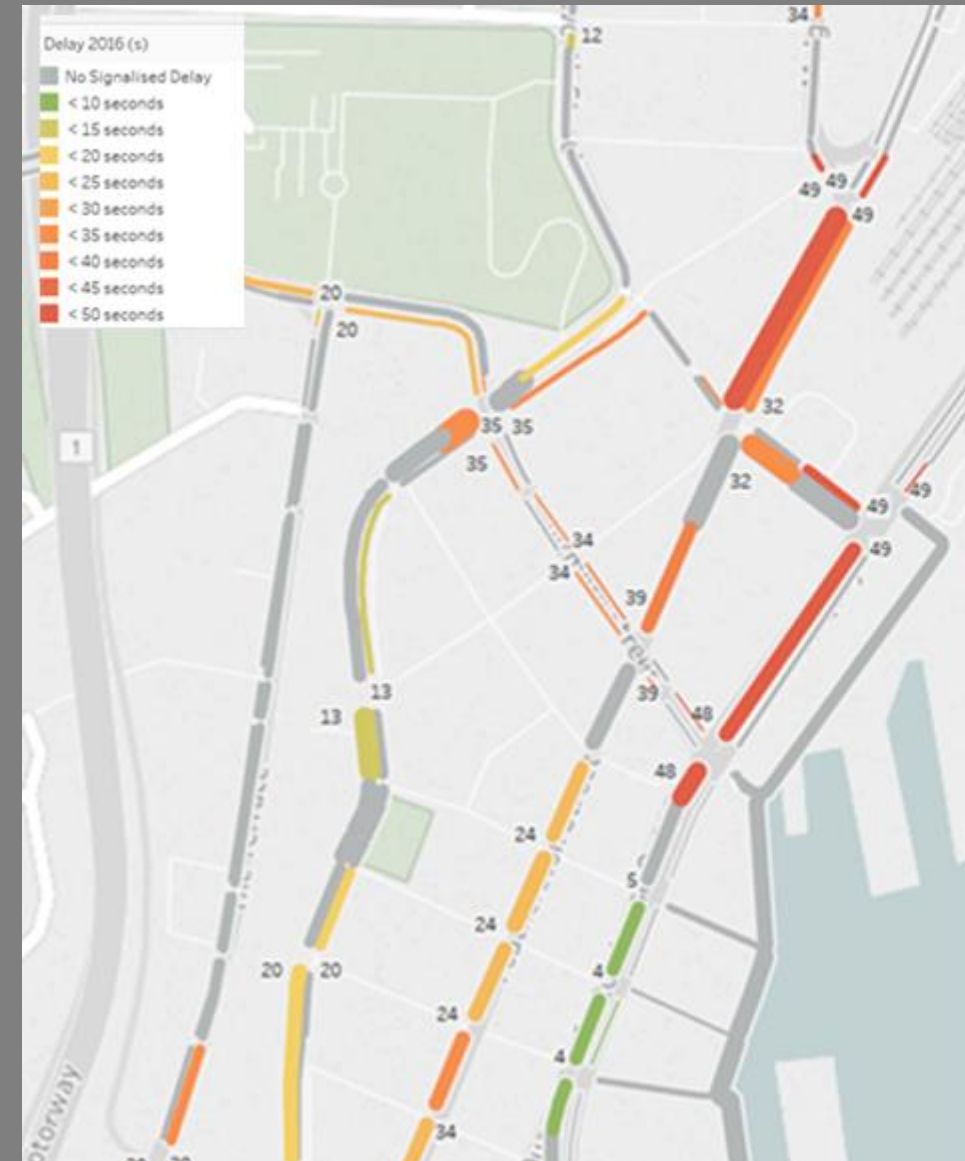




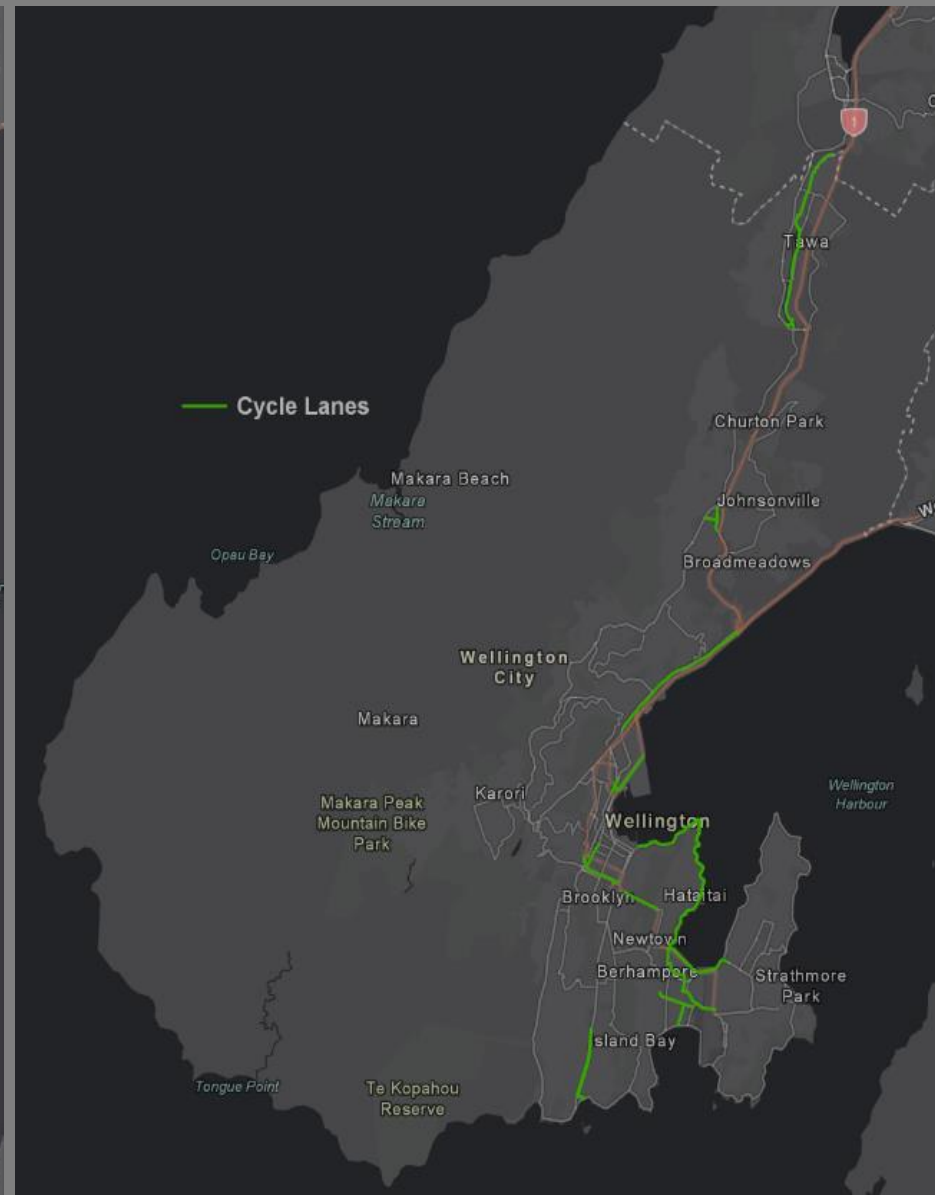
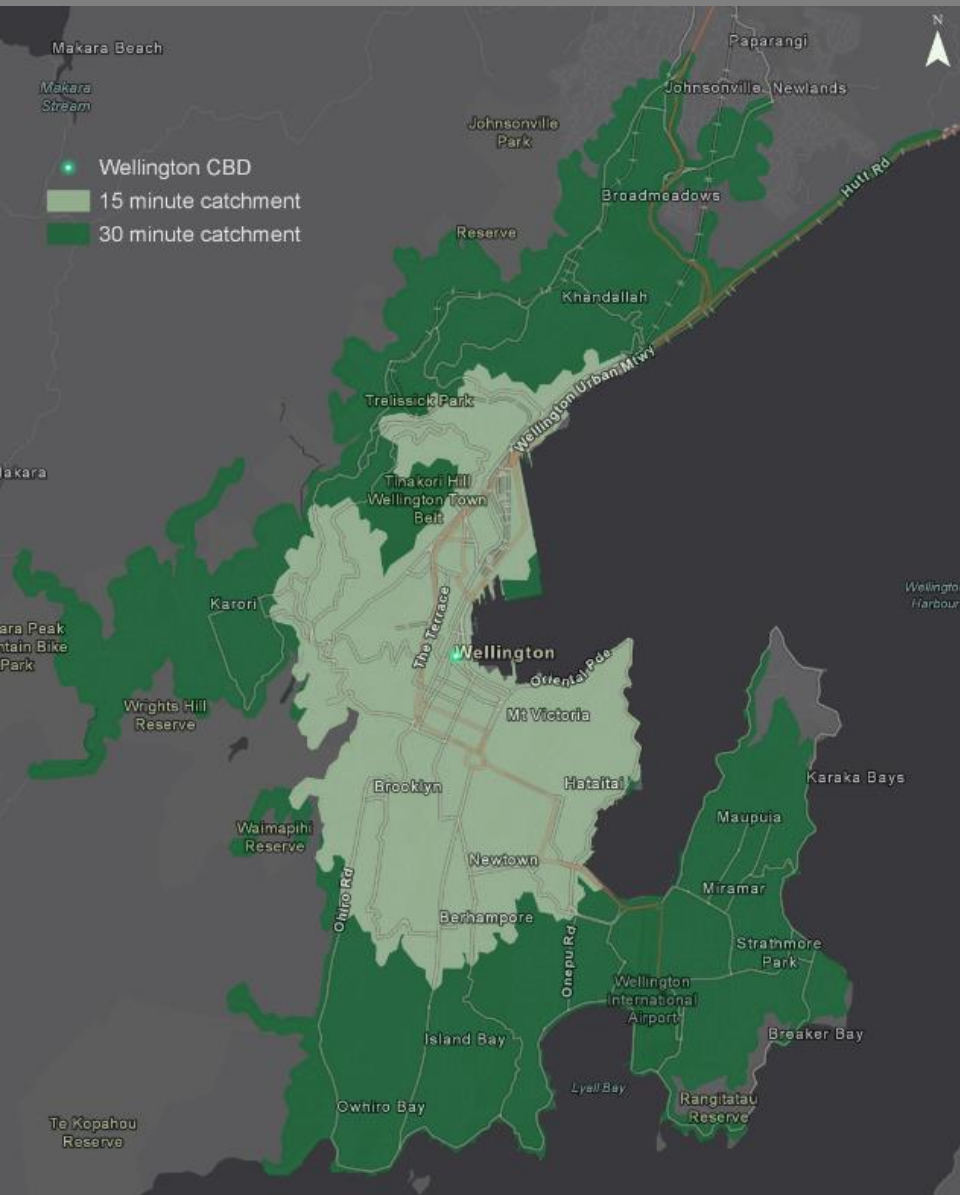
# Pedestrian Crash Hot Spots-Fatal and Serious 2000-2016



# PEDESTRIAN INTERSECTION DELAY (Active Modes Tool- BECA)

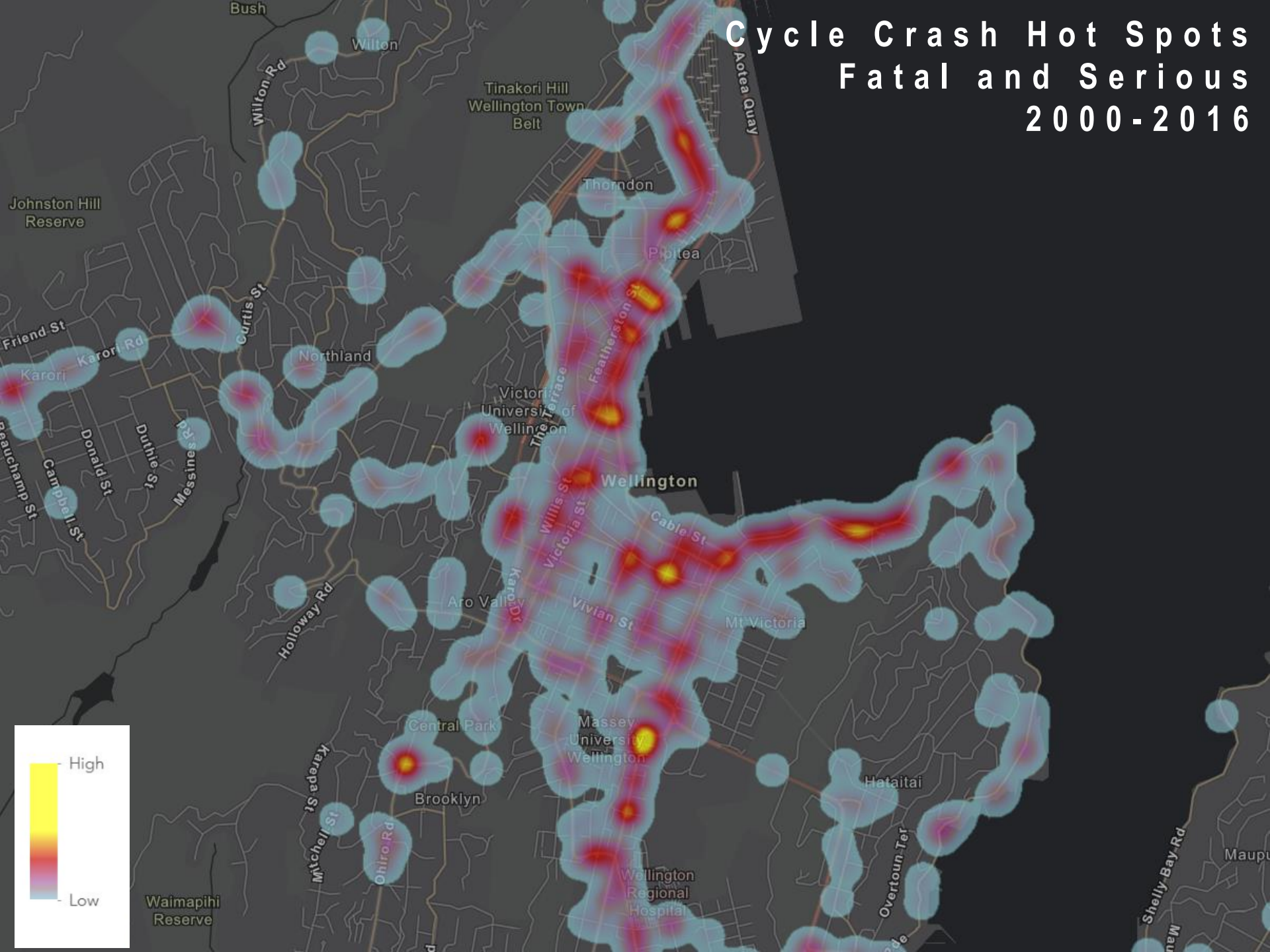


# CYCLING CATCHMENT (inbound CBD)

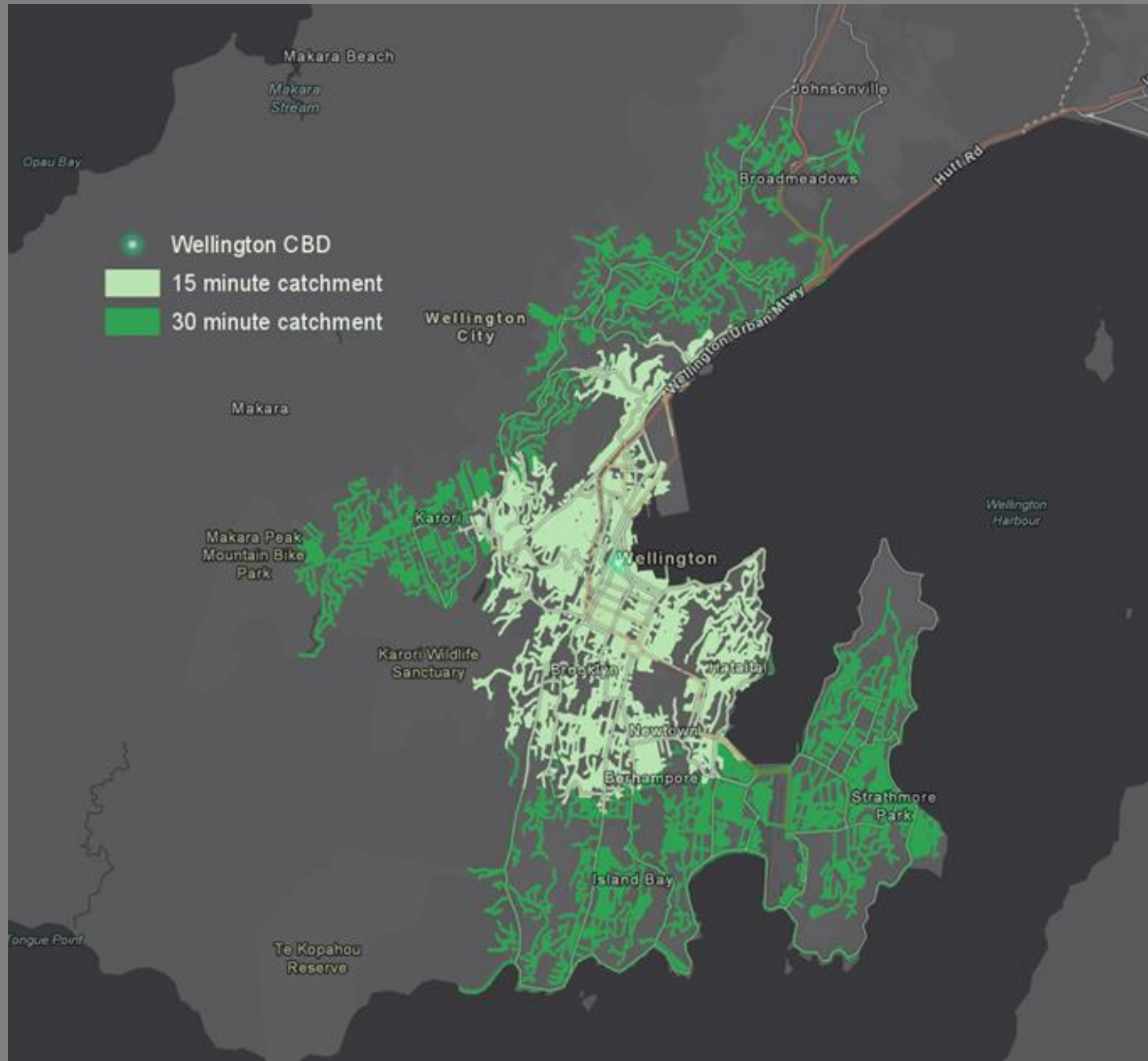




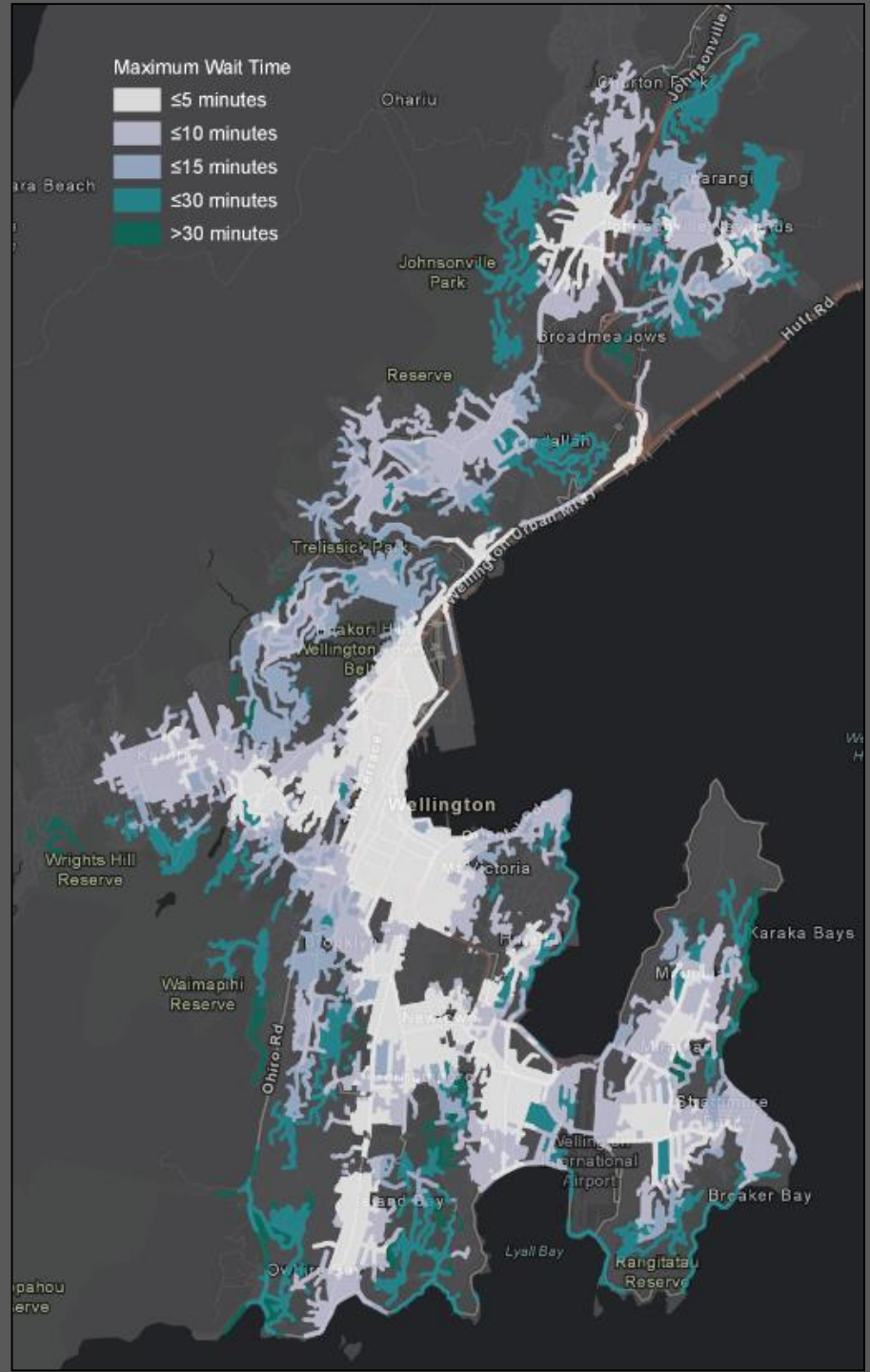
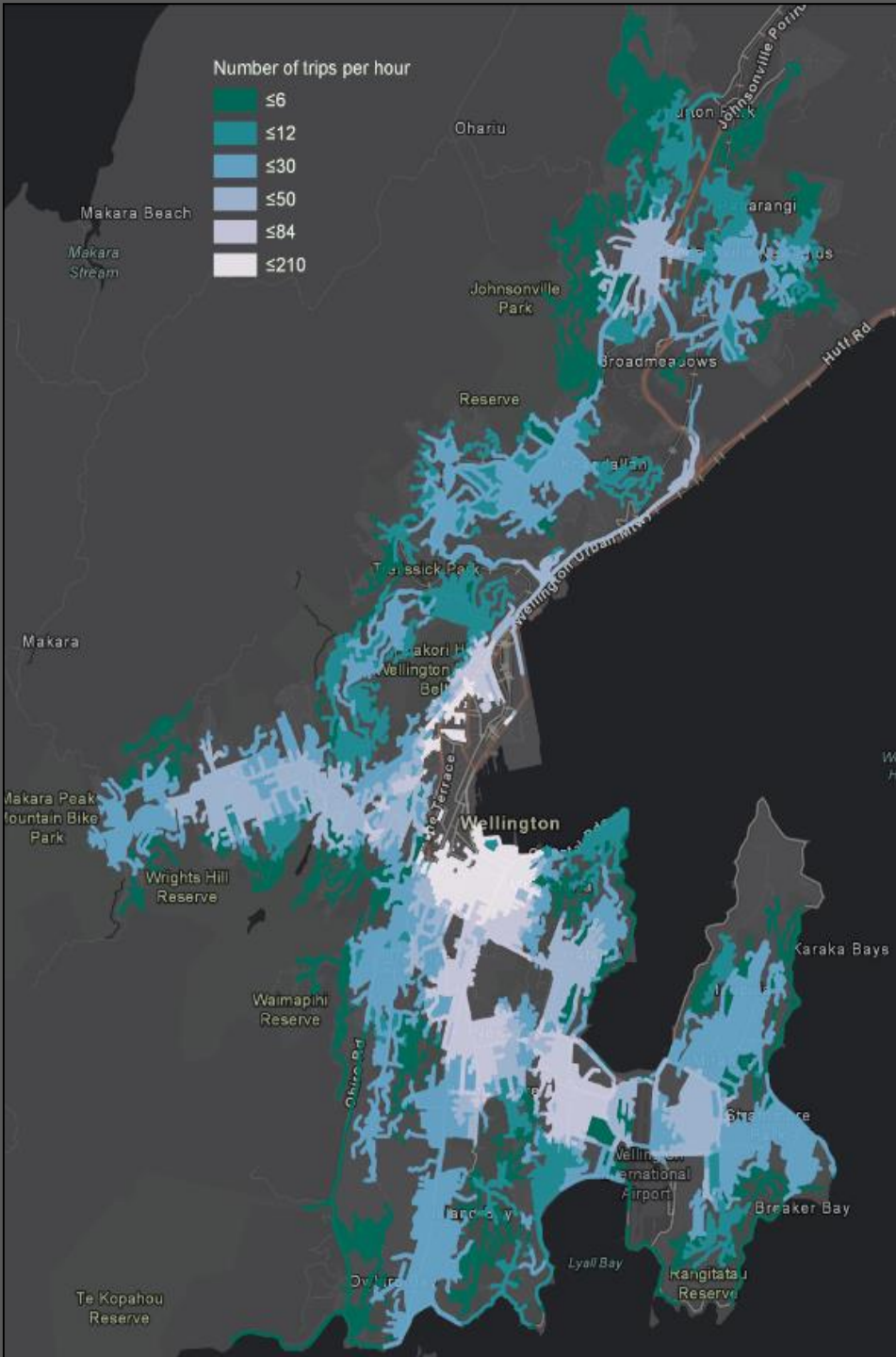
# Cycle Crash Hot Spots Fatal and Serious 2000-2016



# BUS CATCHMENTS (10 minute walk of a bus stop)







The end.