

# NZEUC Transport Special Interest Group

**GIS contribution to management of the NZ Railway Network**

Paul Shivnan  
Finance and Asset Services Manager  
August 2018



# Rail's contribution to the NZ economy

## Rail benefits New Zealand

Passenger and rail freight both contribute significantly to the New Zealand economy.

The total economic value of rail is:

**\$1.47B-**  
**\$1.54B**  
EVERY YEAR



Total value is derived from:

**\$1.3B**  
reduced congestion

**\$8.5M**  
reduced emissions

**\$60M**  
improved safety outcomes

**\$63M**  
reduced road maintenance

This value far exceeds the government's annual investment in rail



# Who is KiwiRail

A Statutory Corporation and the backbone of NZ's Integrated Transport Network

- 4000 staff across the length of New Zealand
- 198 mainline locomotives
- 3 ferries
- Fuel costs per annum of around \$60M
  
- 18000 hectares of land covering 61? Territorial Local Authorities
- 4000 kms of corridor
- 4023 level crossings
- 145 tunnels
- 1537 rail bridges
  
- 2955 leases to third parties totalling 4800 hectares
- 433 proposed leases
- Revenue from land sales/lease rentals totalling approximately \$45M per annum

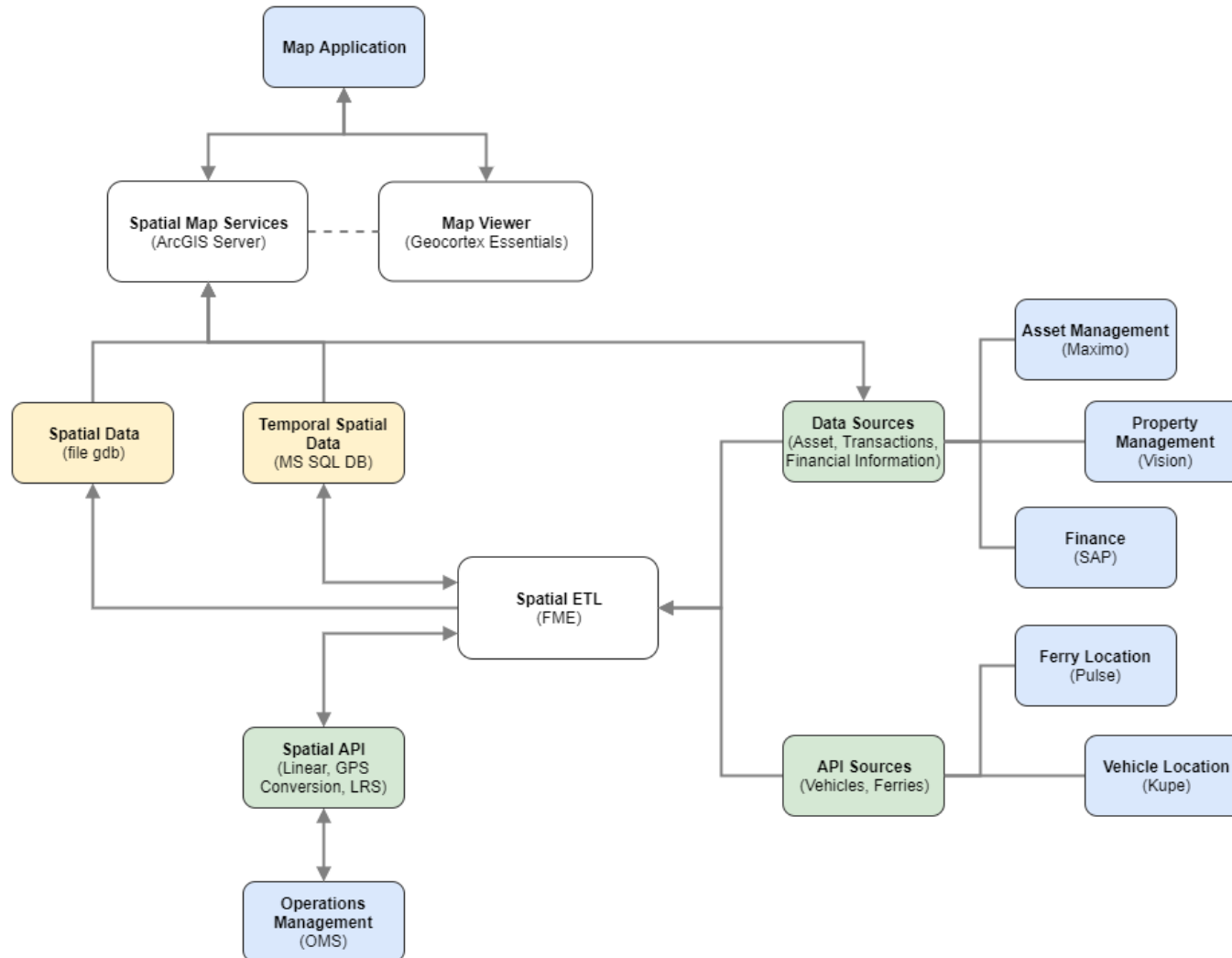


# The GIS team

- Team is split across two separate reporting lines
- Data management sits within Business Intelligence Team
  - Responsible for maintaining datasets, sourcing new data
  - Managed by Kirsten O’Neil with one direct report (David Fowler)
- Application management sits within ICT Team
  - Responsible for maintaining underlying GIS ecosystem, building map services, creating and maintaining map viewers
  - Managed by Paul Shivnan with one direct report (Noel Sevilla)
- In order for the GIS to function successfully the teams must operate as a single unit



# GIS Platform Architecture



# Our Applications

- **GeVIS** – Provides Train Control with near real time visibility of our fleet, also a mobile version for our field staff
- **RailView** – Provides an asset rich view that has strong links with our Asset Management system to enhance planning of maintenance activities on the network
- **PropertyView** – Land Management centric view. Major tool for our land and lease managers for revenue generation and for resource management activities
- **DAS** – Driver Advice System – In loco application that advises locomotive engineers on the most efficient way to drive their train. Has resulted in fuel savings since 2015 of 16 million litres at a cost saving of \$11M.
- Rail datasets available:
  - <http://data-kiwirail.opendata.arcgis.com/datasets>
- 

